

Images of RS1 (Hide-scraping) residues
using Leica MZ16 and MZFLIII stereomicroscopes; some are extended depth of
focus

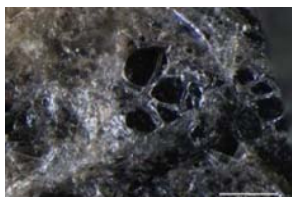
The key to the images is at the beginning of the document.

The images published in this pdf are those that were used in the training portion of the experiment reported in Monnier et al. 2012, *J. Arch. Sci.* For questions, please contact Gilliane Monnier at monni003@umn.edu.

Naming conventions: 'RS' = Residue Study; 'D' = Dorsal side; 'V' = Ventral side; 'a', 'b', etc. = residue label; '25', '50', '115' = magnification used



1D_a_115_composite_scaled



1D_a1_composit_scaled_Leic



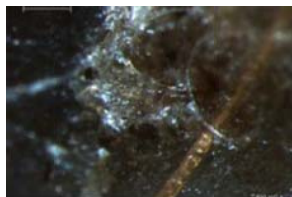
RS1D_a20.jpg



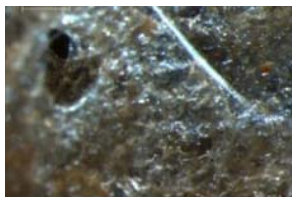
RS1D_a50.jpg



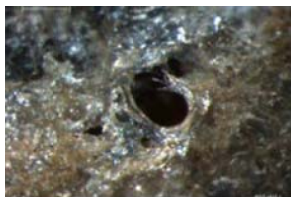
RS1D_a50_b.jpg



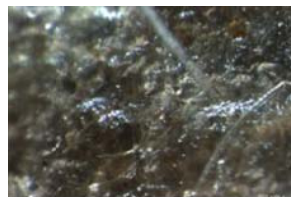
RS1D_a115_a.jpg



RS1D_a115_b.jpg



RS1D_a115_c.jpg



RS1D_a184_a.jpg



RS1D_a184_b.jpg



_1_SEMcomp_50_composite_



_2_SEMcomp_50_composite_



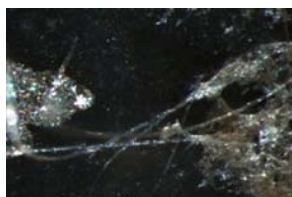
1D_b_115_composite_scaled



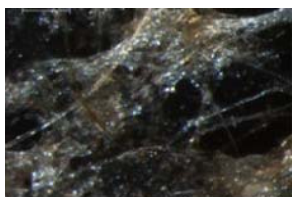
_SEMcomp_115_composite_



RS1D_b50.jpg



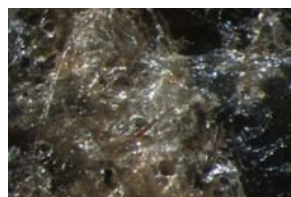
RS1D_b80.jpg



RS1D_b115_a.jpg



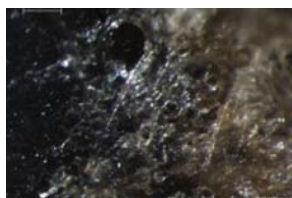
RS1D_b184_a.jpg



RS1D_b184_b.jpg



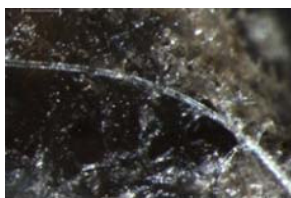
RS1D_b184_d.jpg



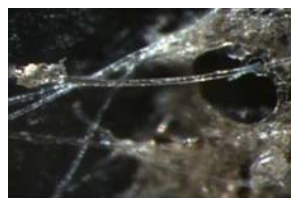
RS1D_b184_e.jpg



RS1D_b184_f.jpg



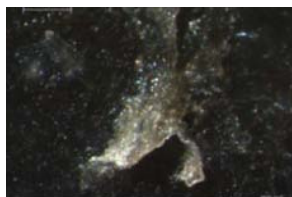
RS1D_b184_g.jpg



RS1D_b184_h.jpg



RS1D_c50.jpg



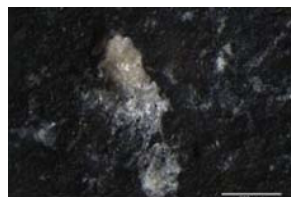
RS1D_c115.jpg



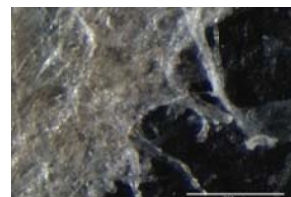
1D_f_composit3_scaled_Niko



RS1D_f50.jpg



1D_g1_composit_scaled_Leic



1D_j1_composit_scaled_Leic



RS1V_a115.jpg



RS1V_b50.jpg



RS1V_b115.jpg



RS1V_c50.jpg



RS1V_c115.jpg



RS1V_d50.jpg



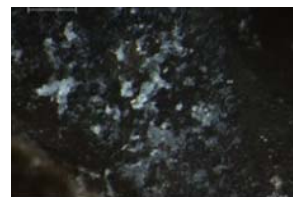
RS1V_d115_b.jpg



RS1V_e50.jpg



RS1V_e115.jpg



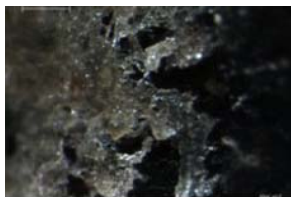
RS1V_f115.jpg



RS1V_g50.jpg



RS1V_g50_b.jpg



RS1V_g115.jpg



RS1V_g115_b.jpg



RS1V_h50.jpg



1V_j2_composit_scaled_Leica



RS1V_j50.jpg



RS1V_j115.jpg



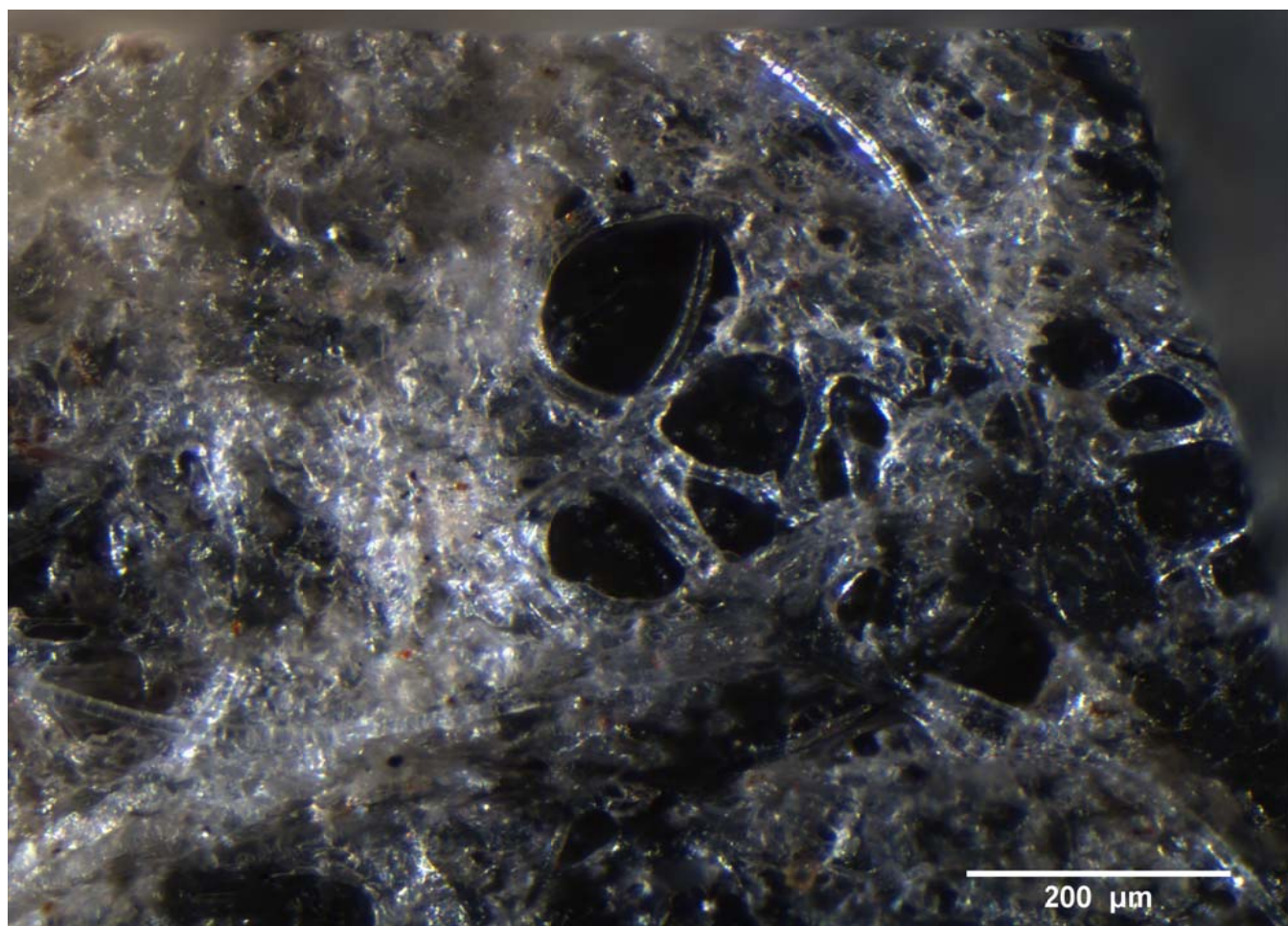
1V_k1_composit_scaled_Leica

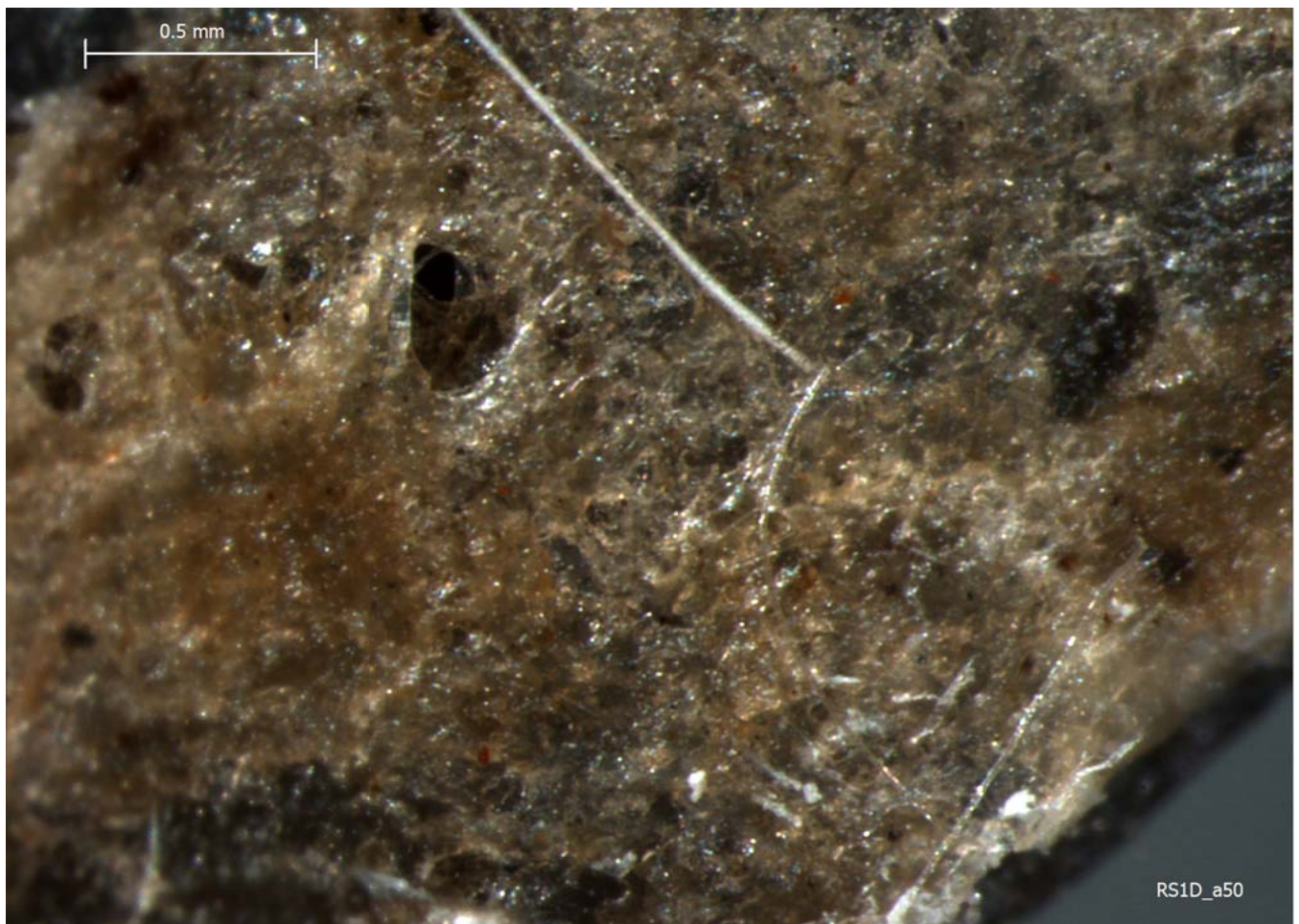
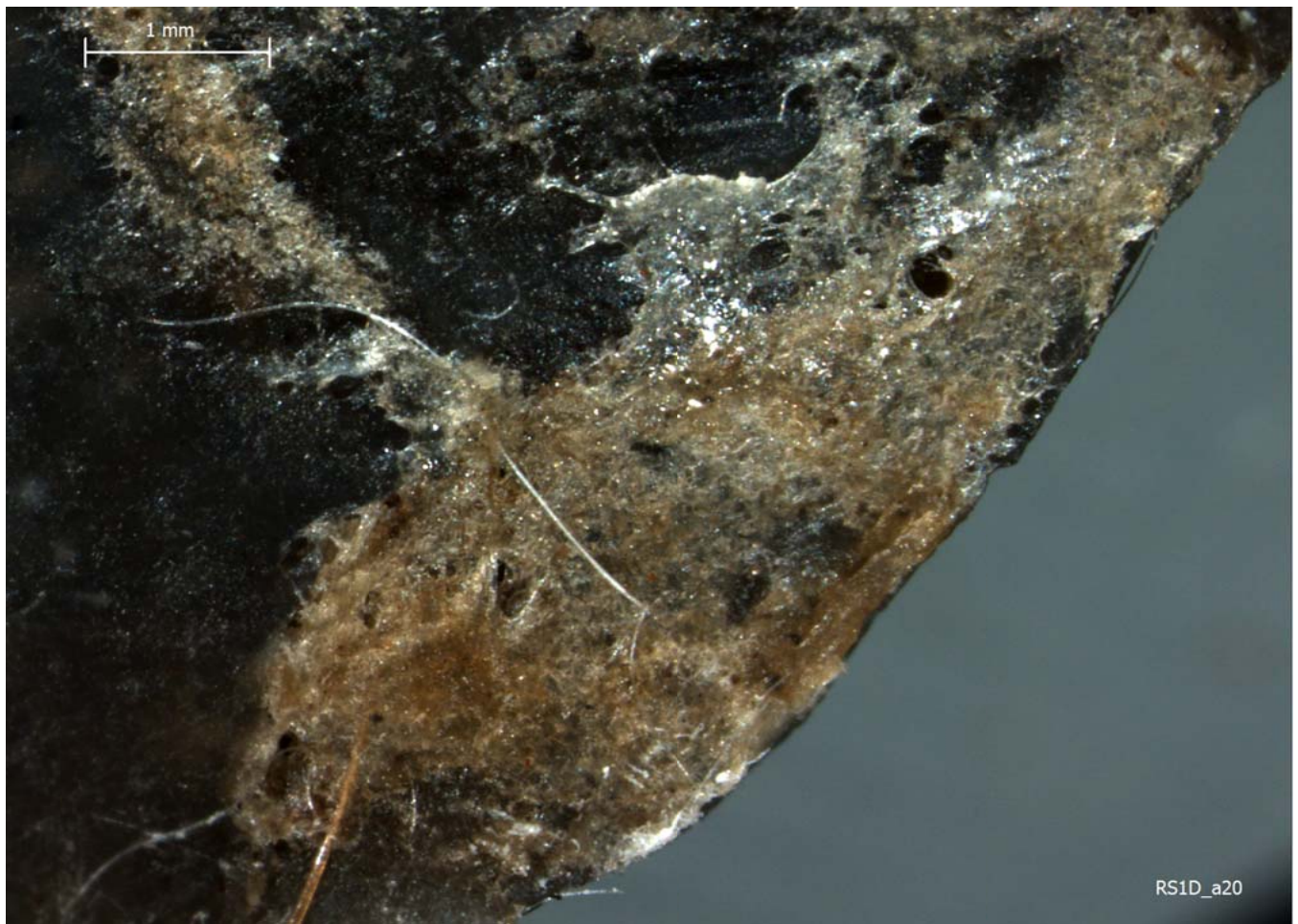


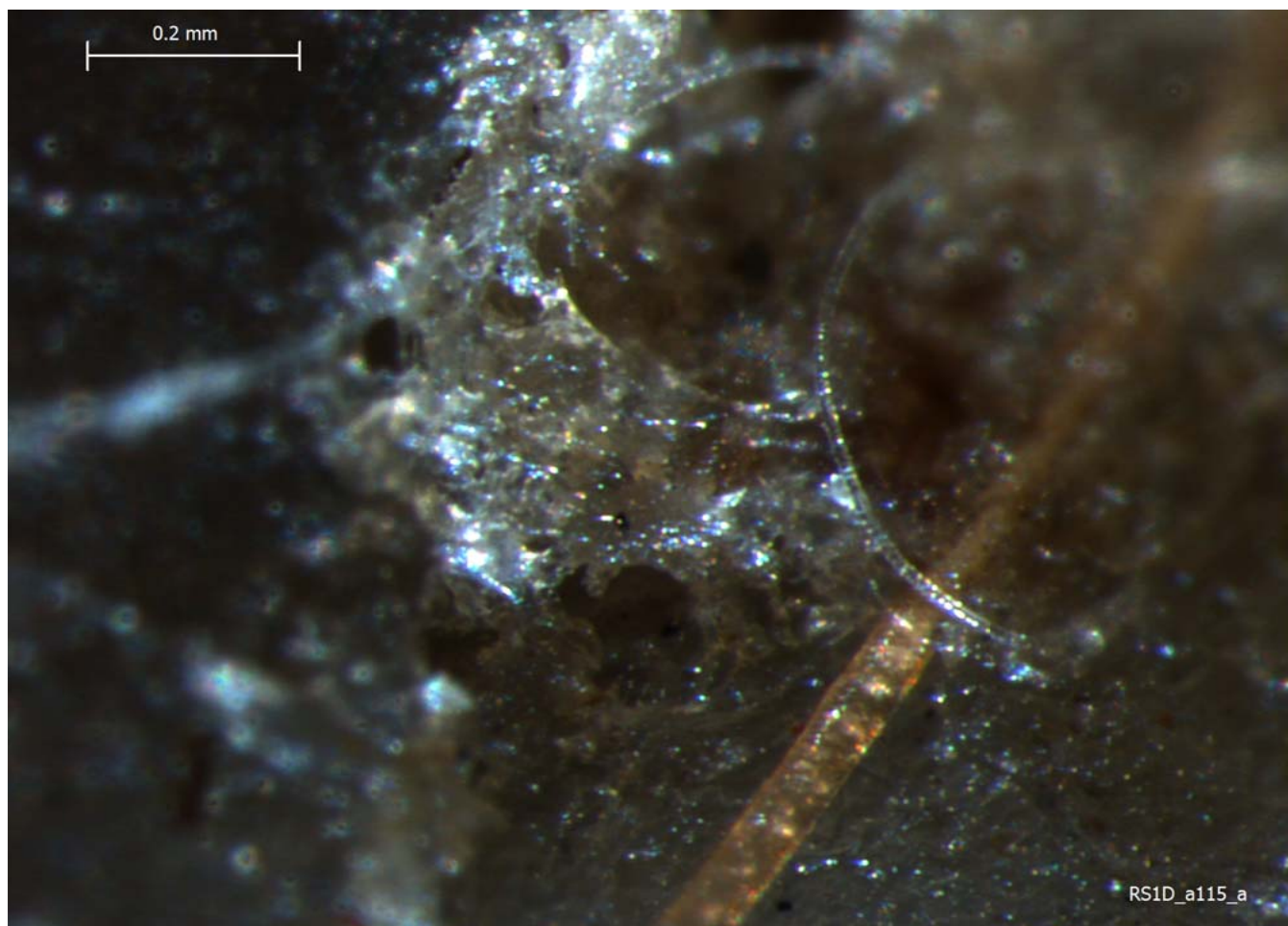
RS1V_k50.jpg

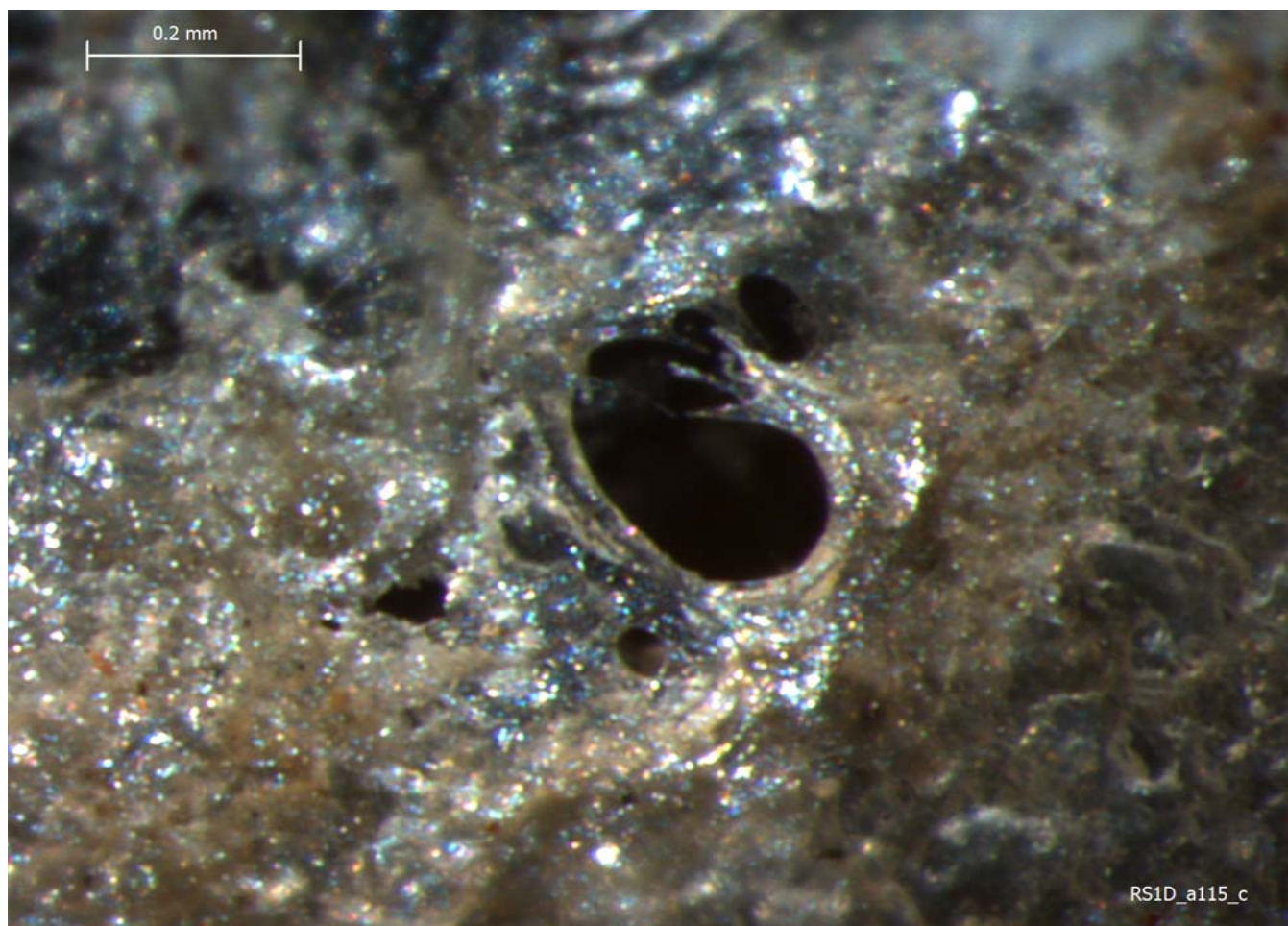
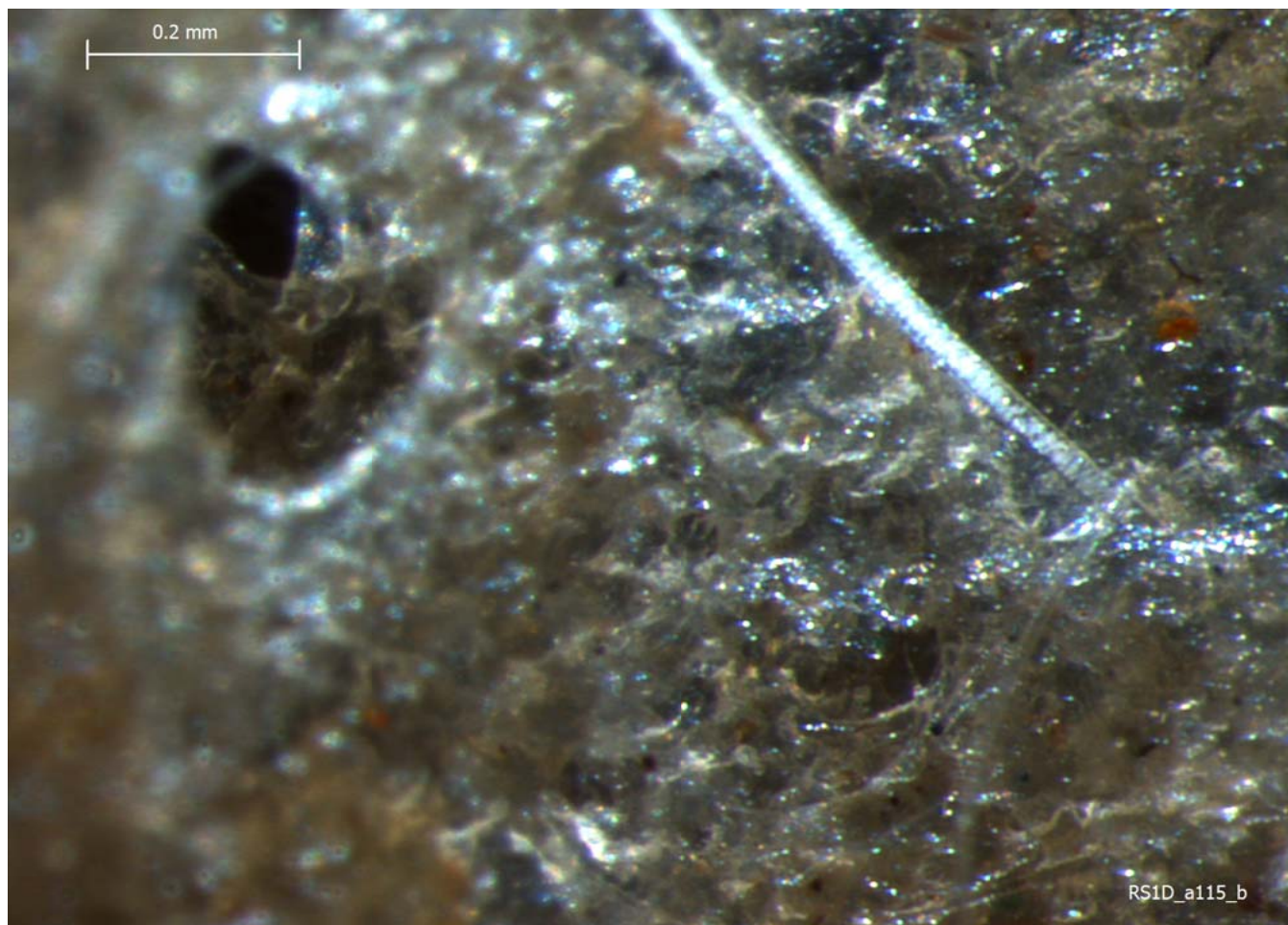


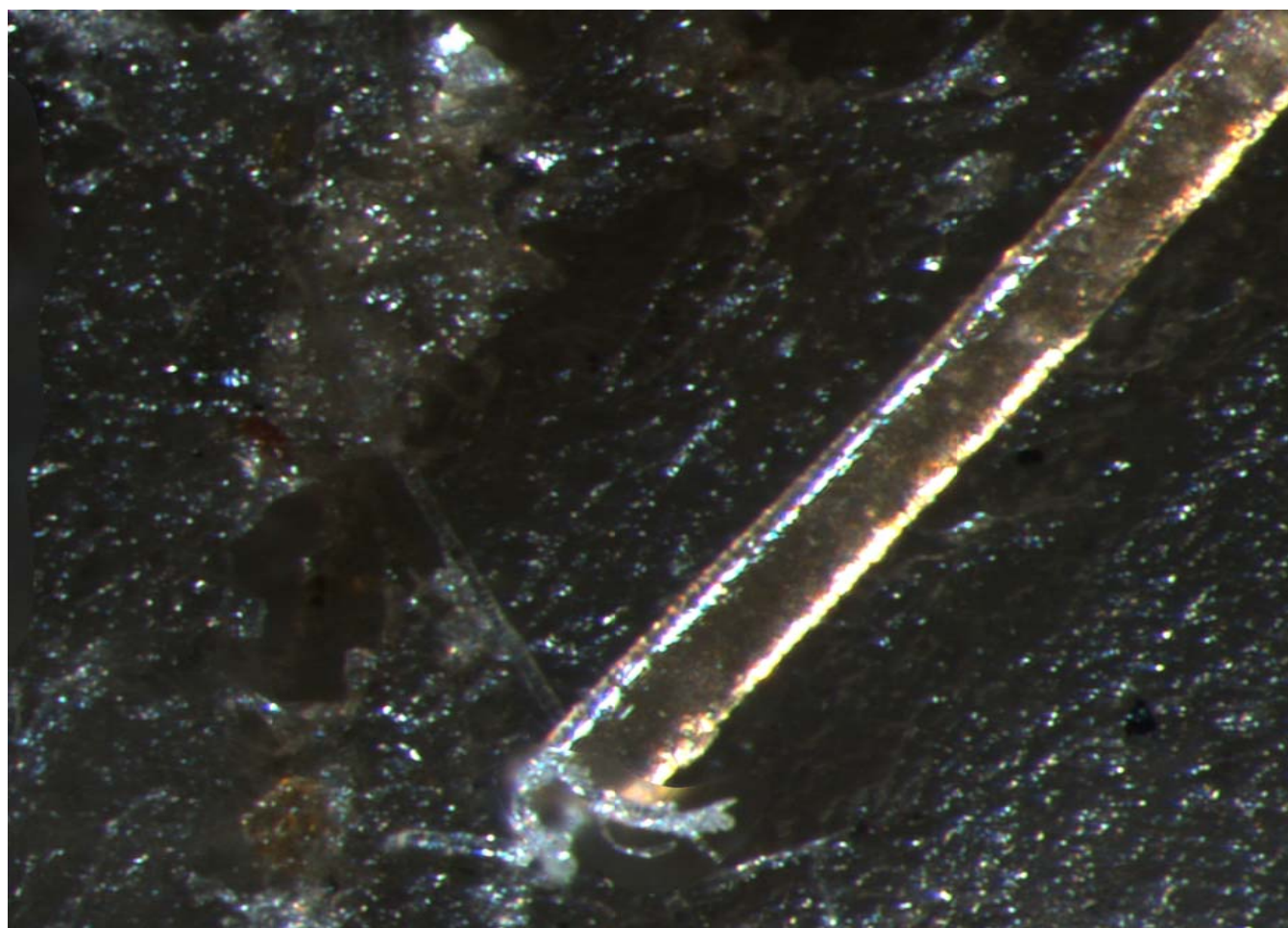
RS1V_k115.jpg

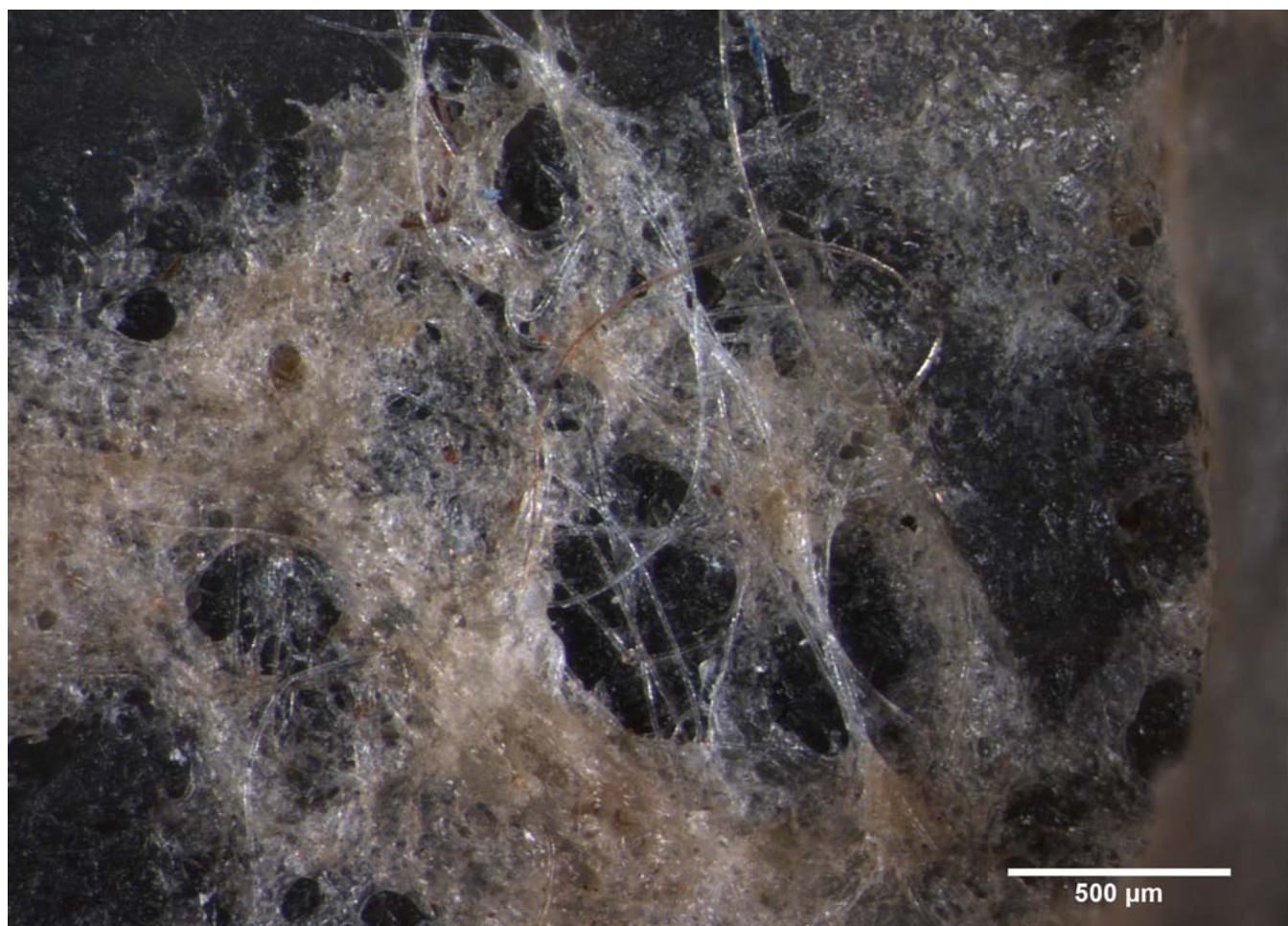
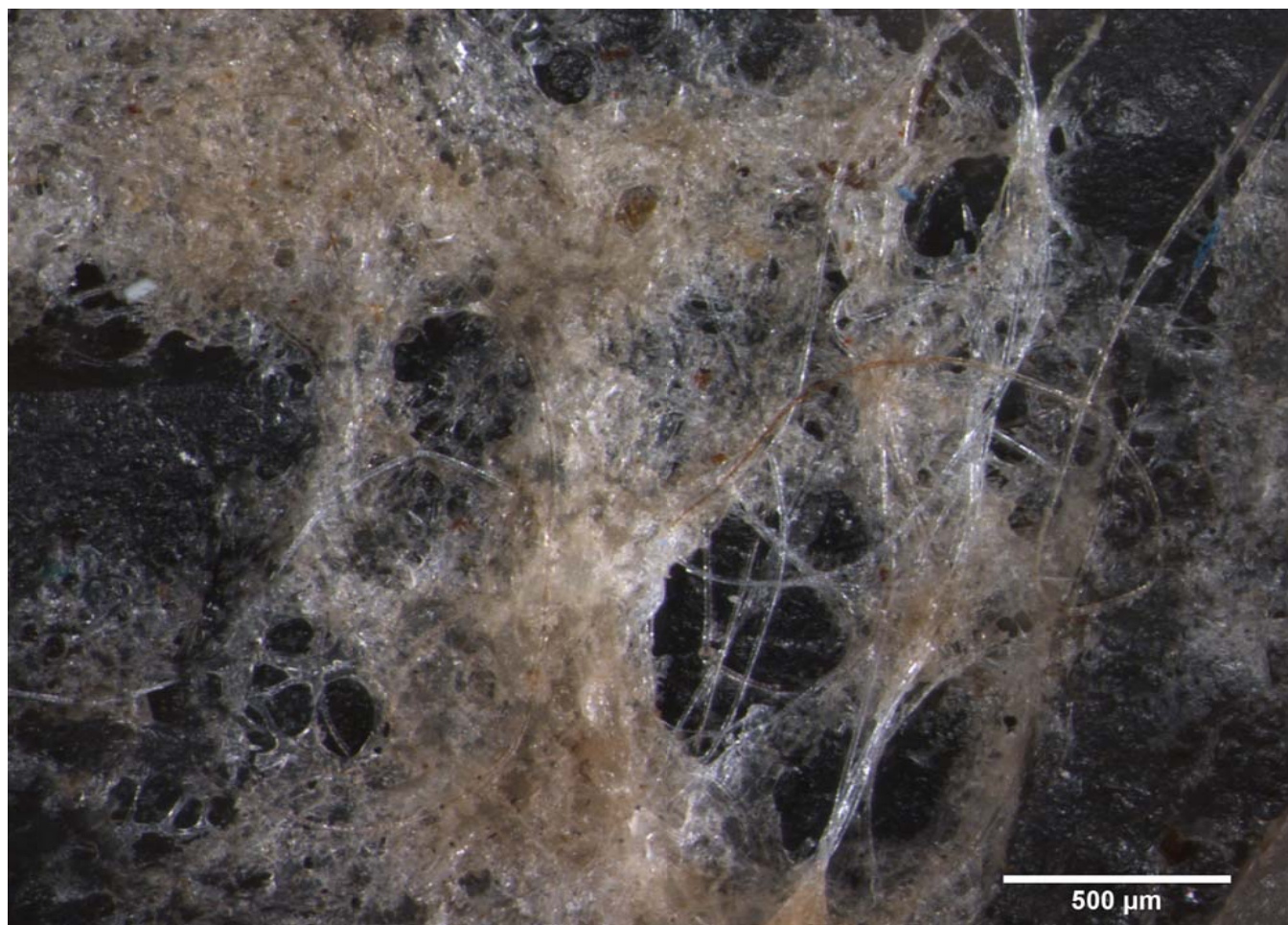


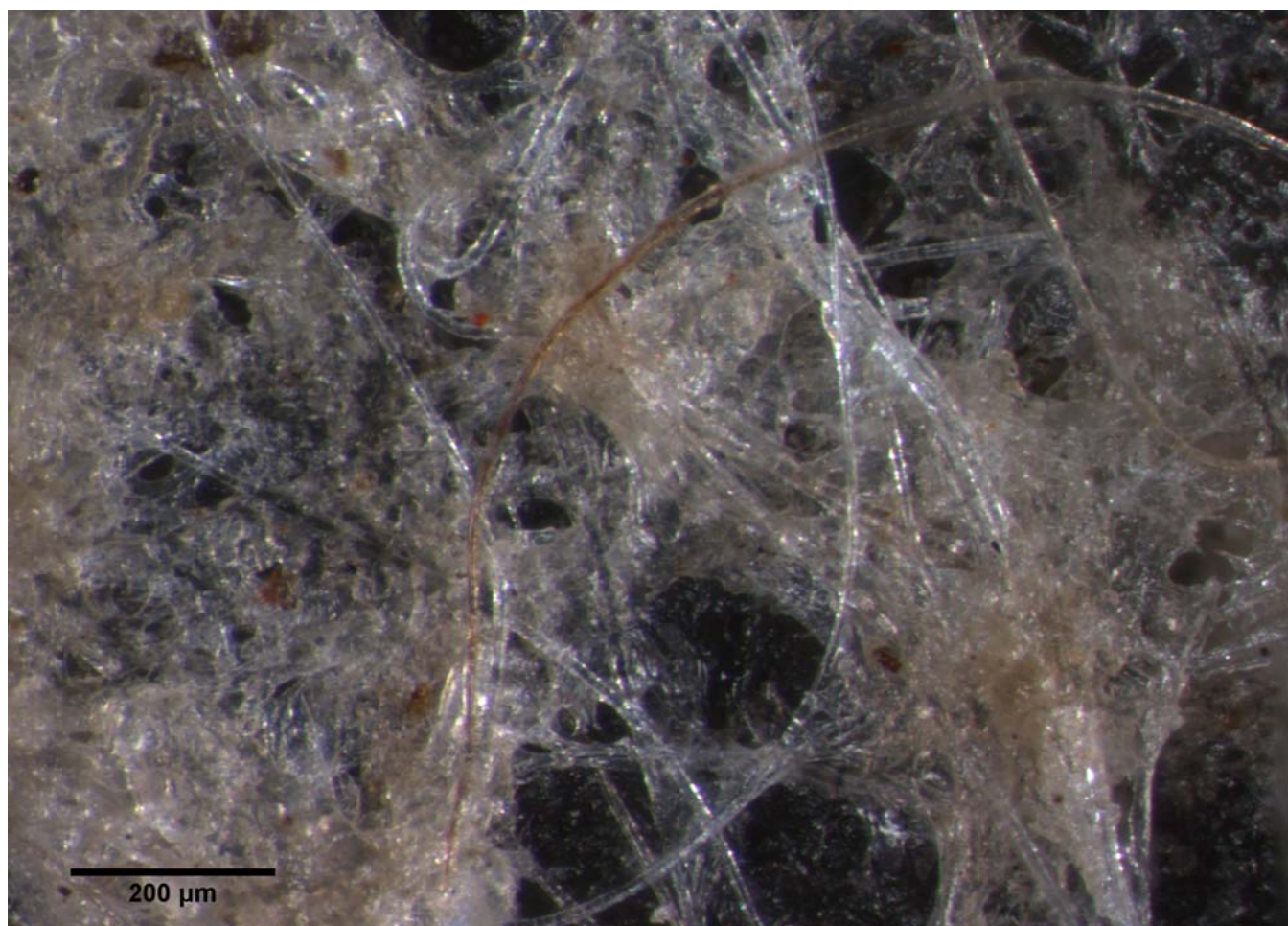
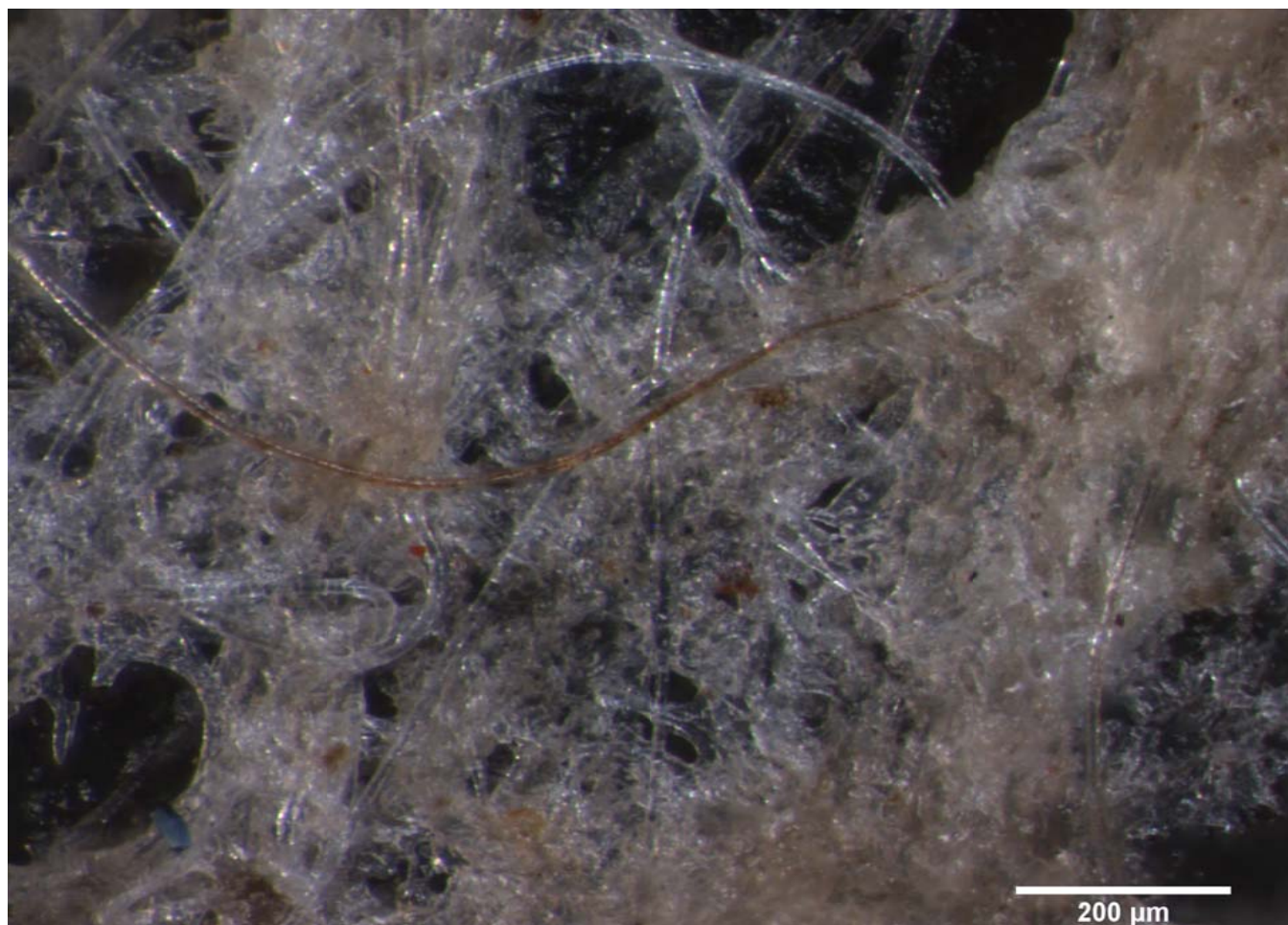


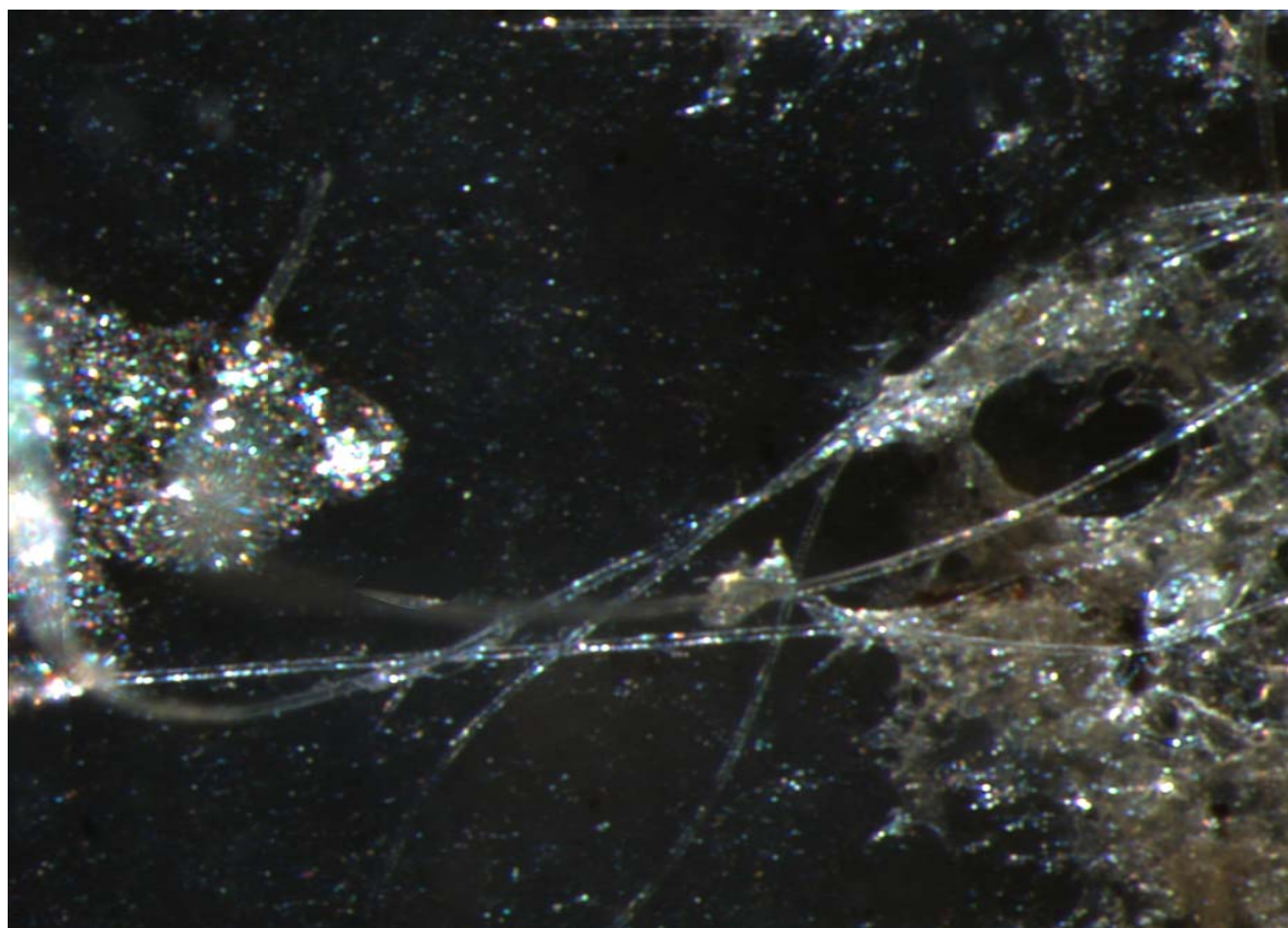
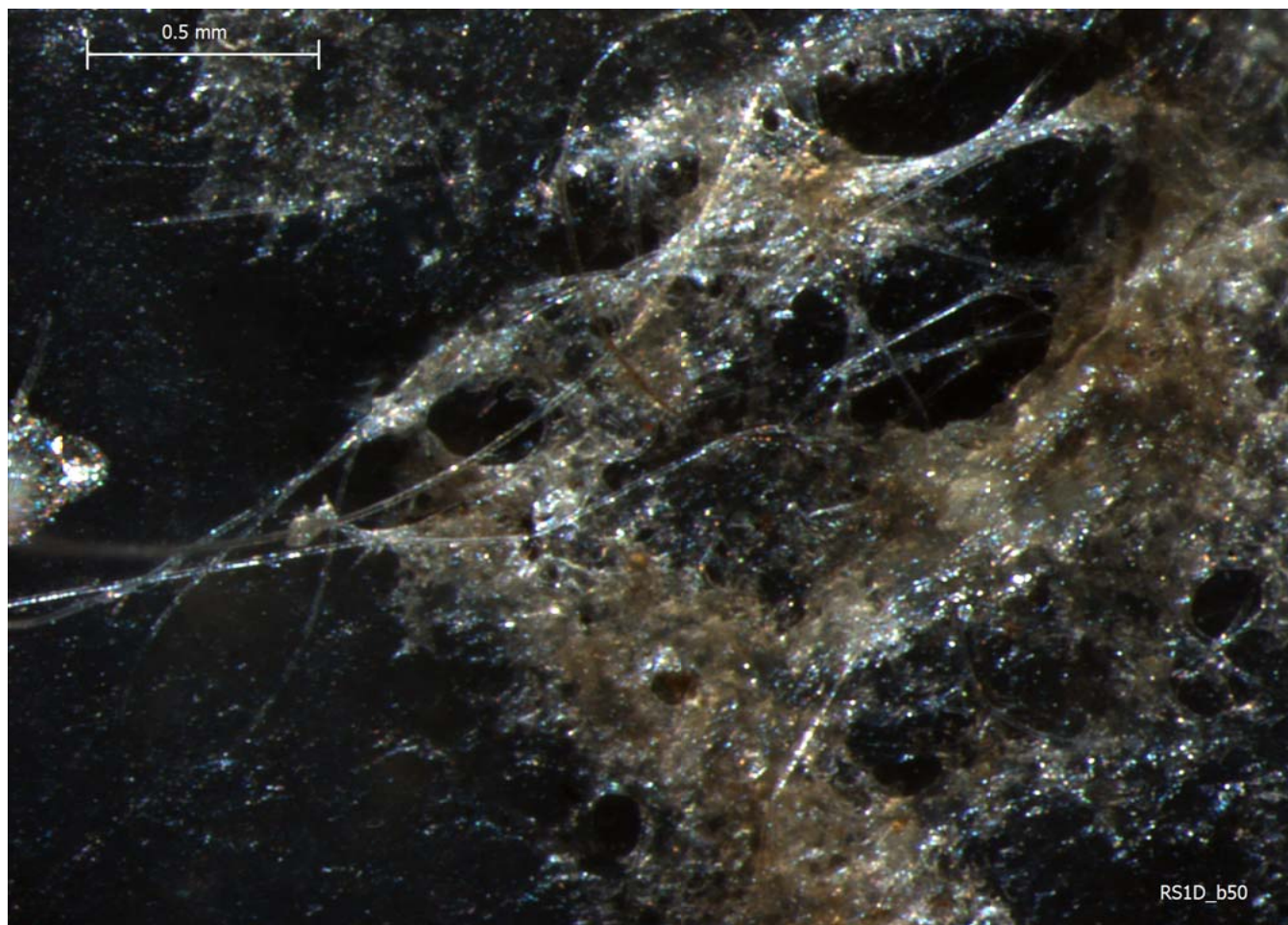


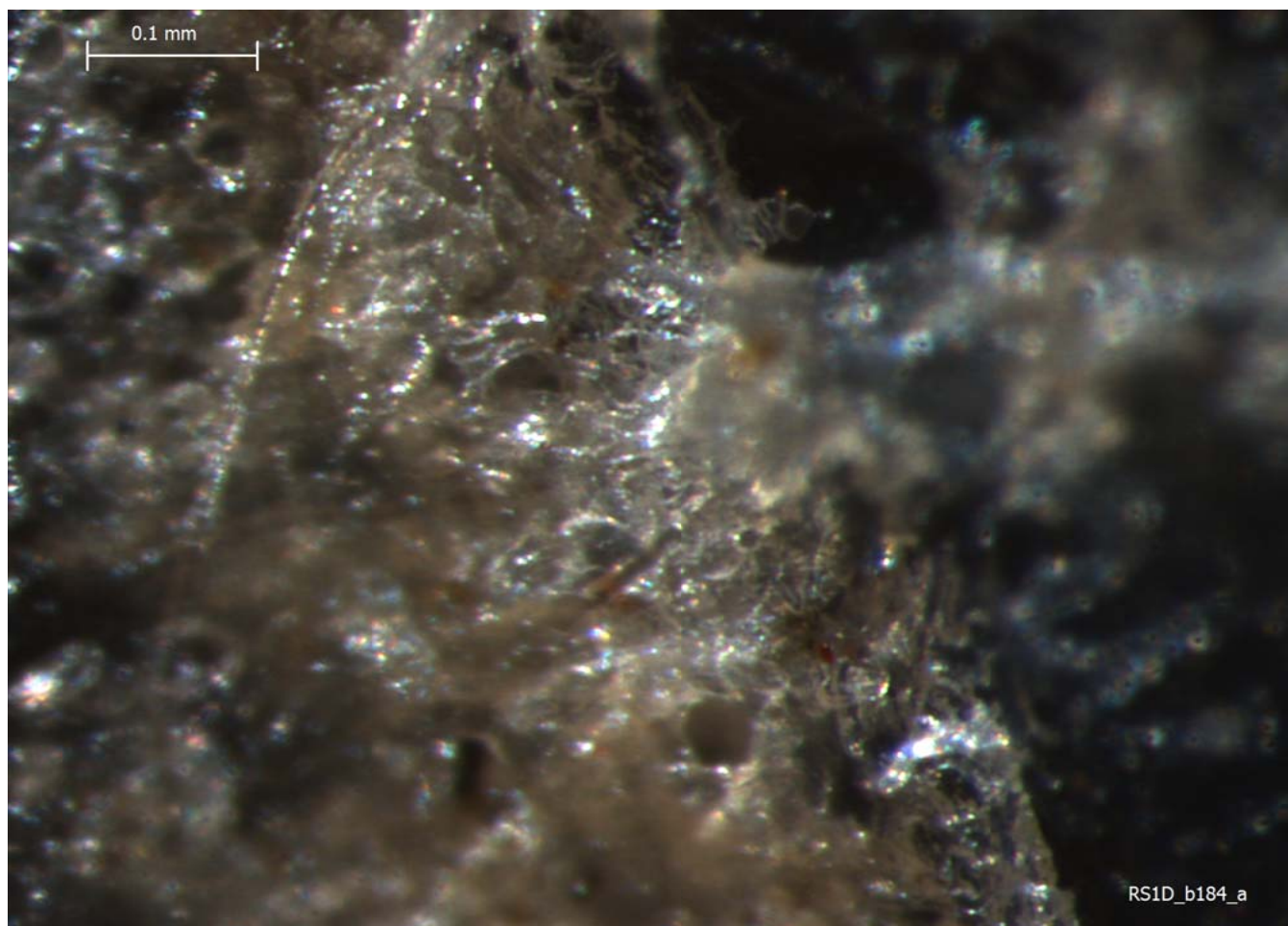
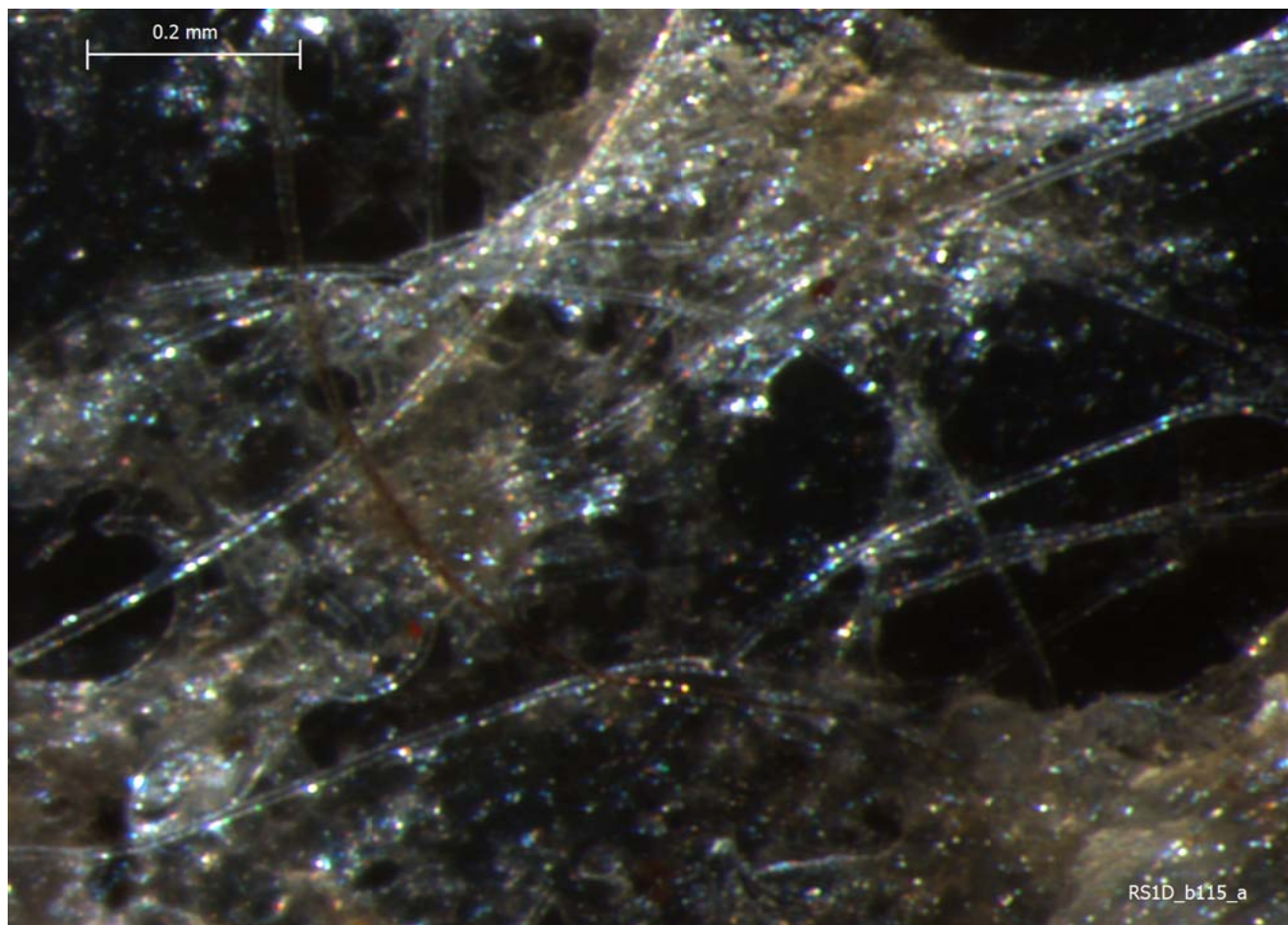


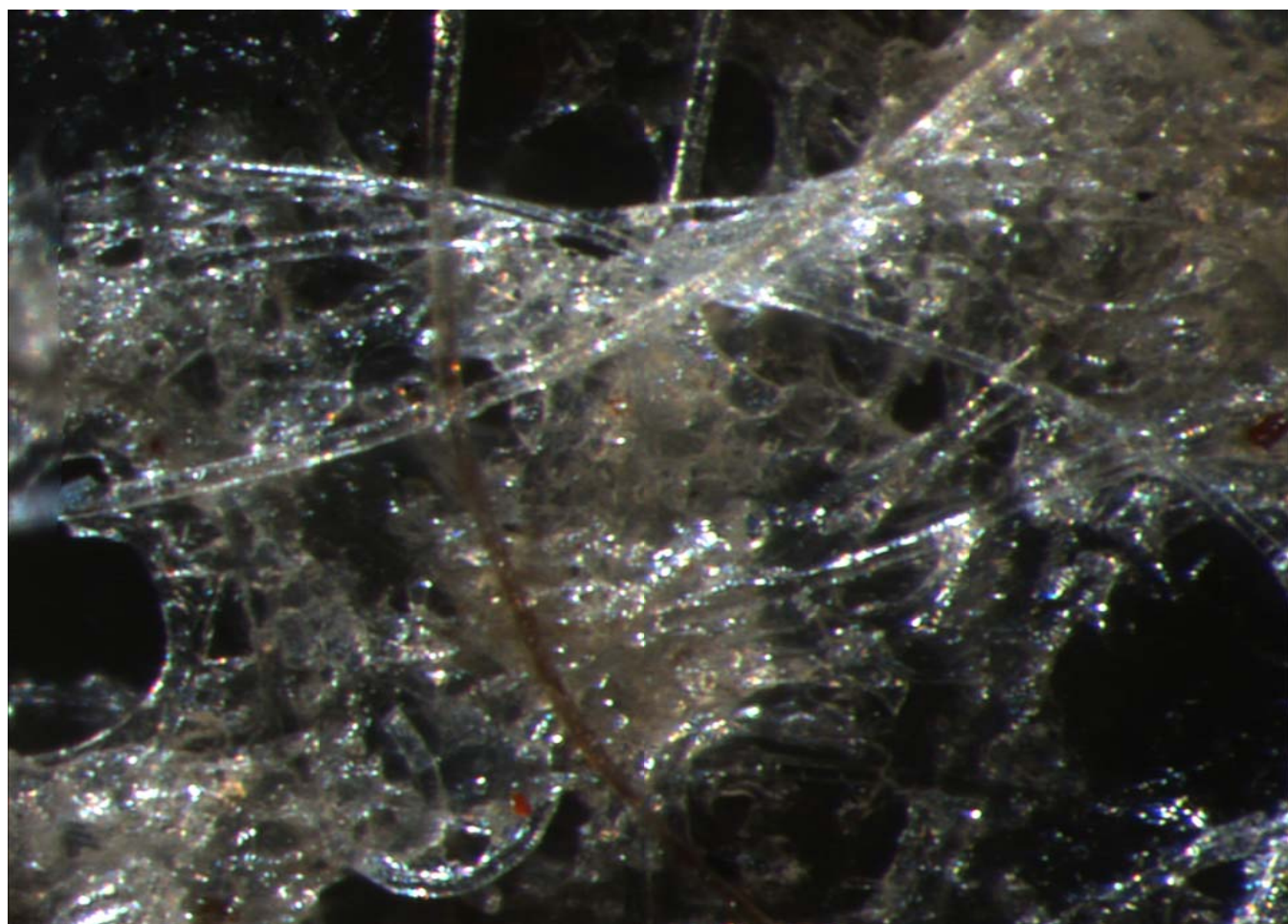
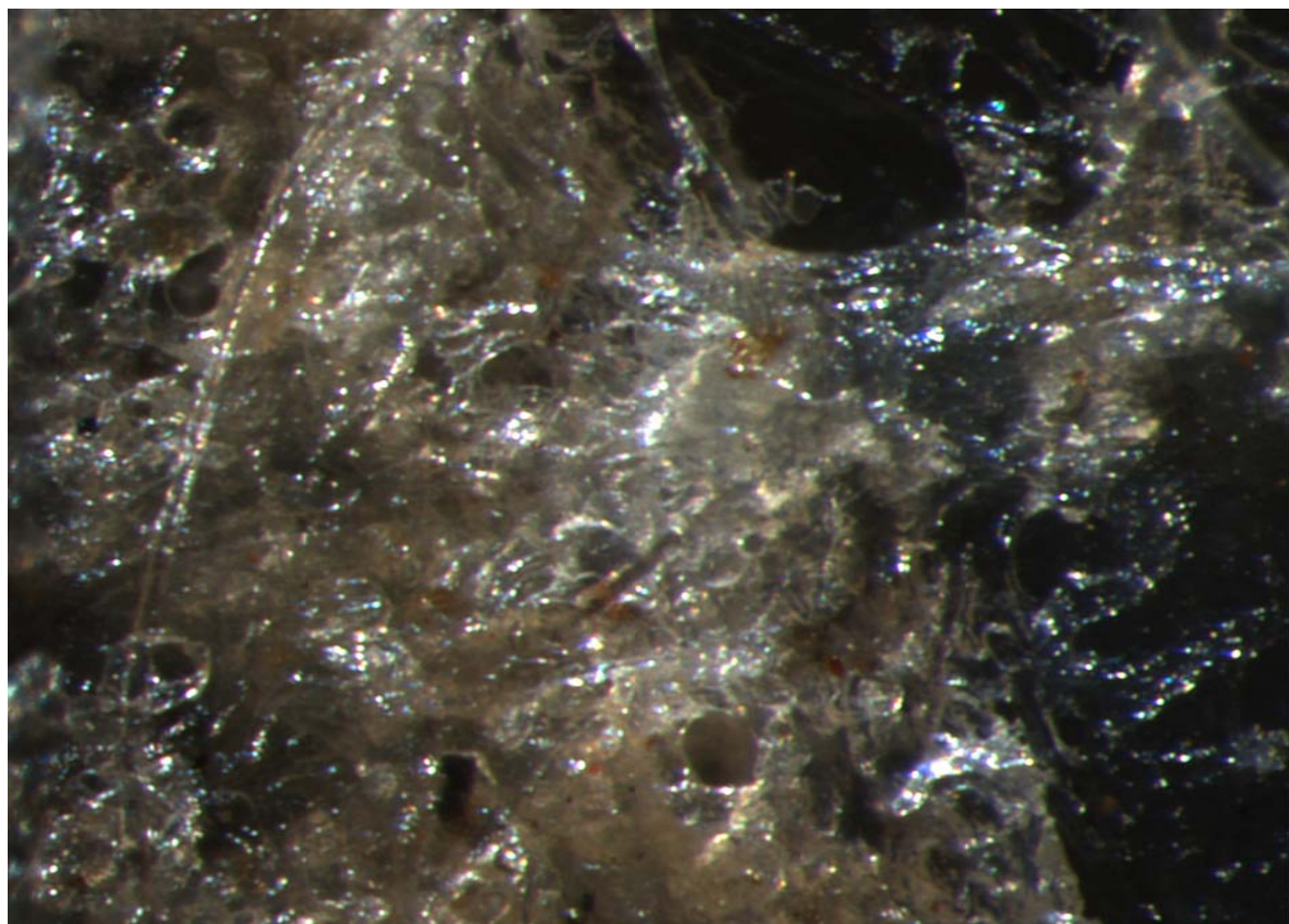


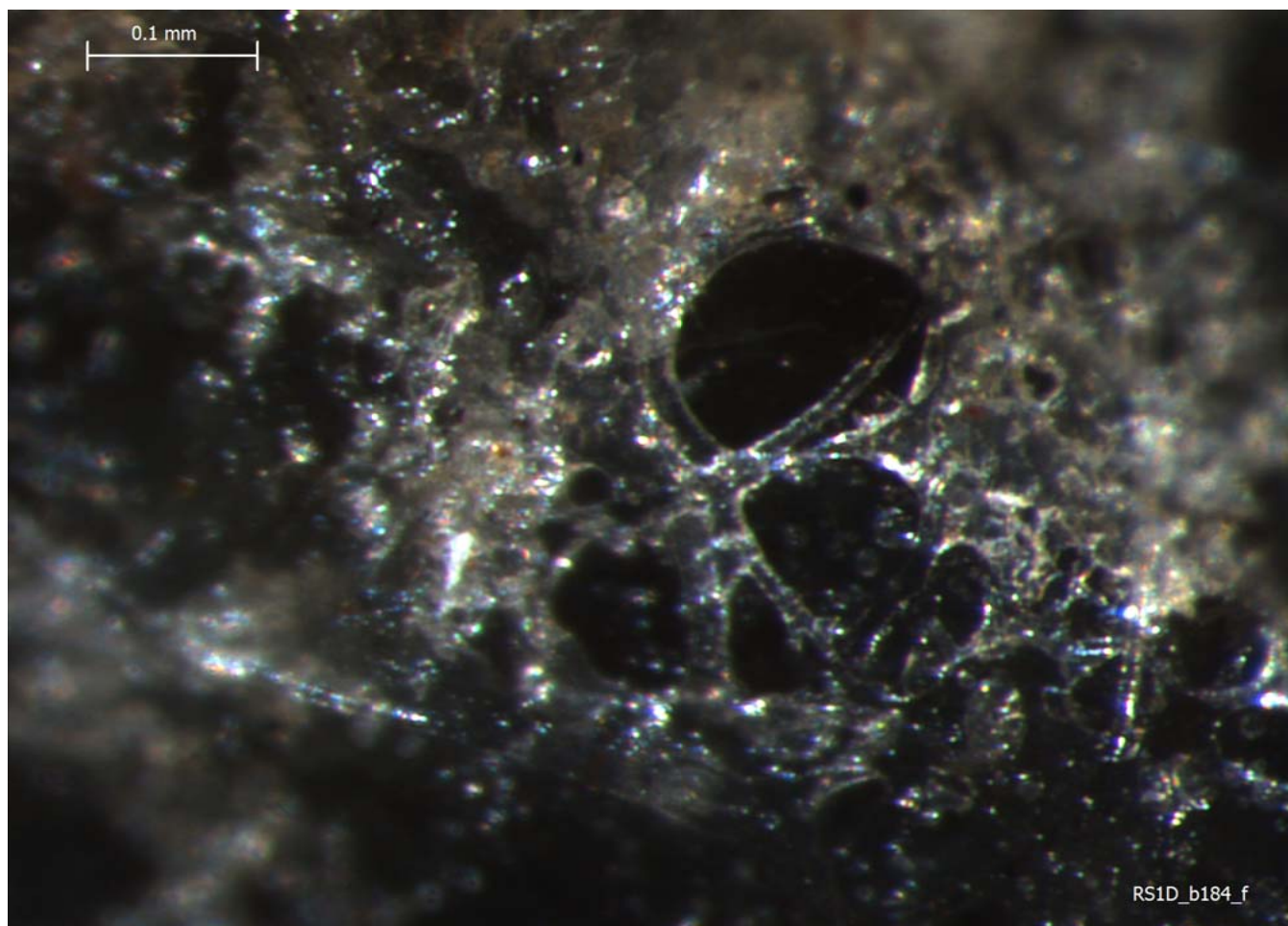
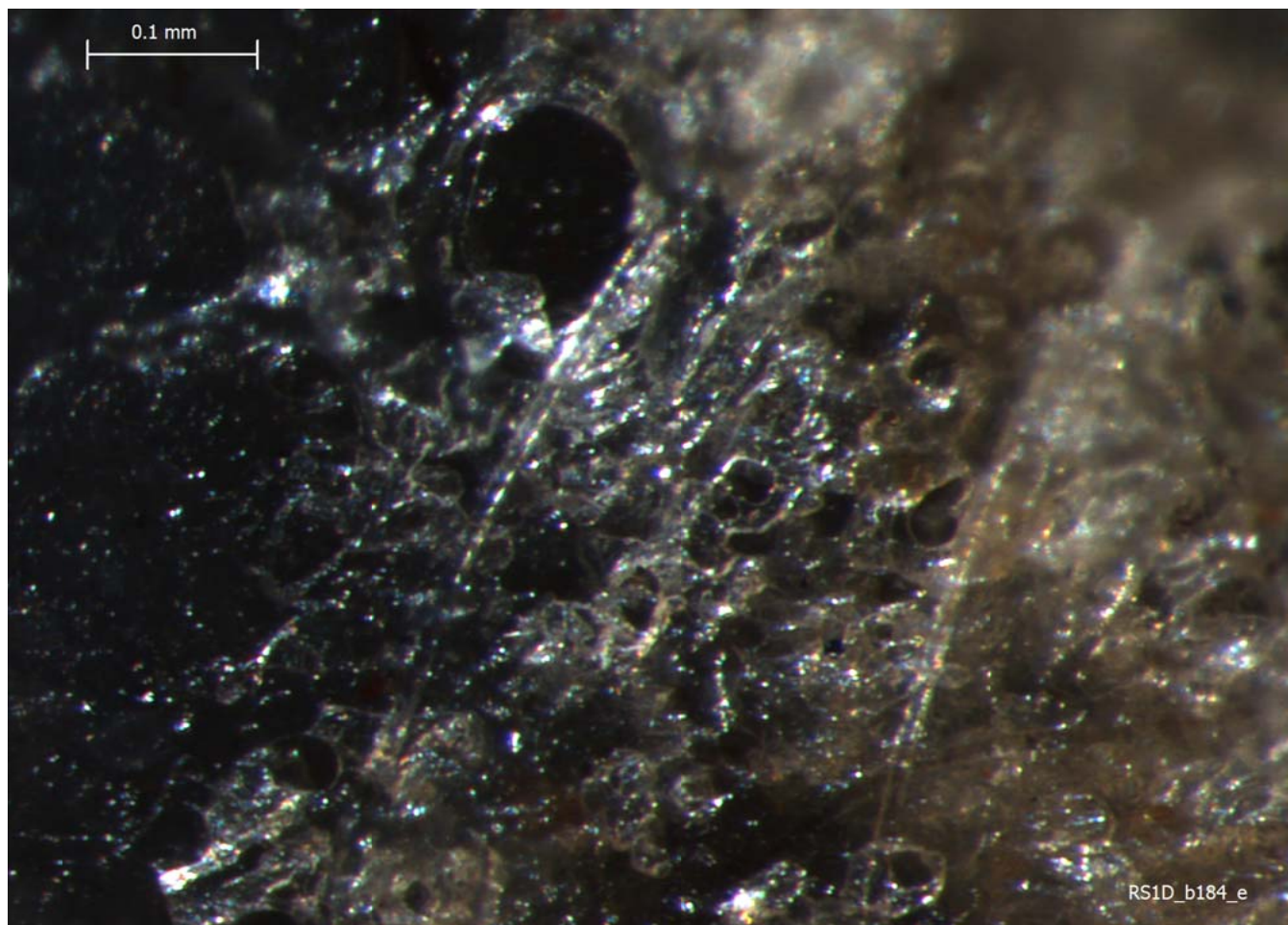


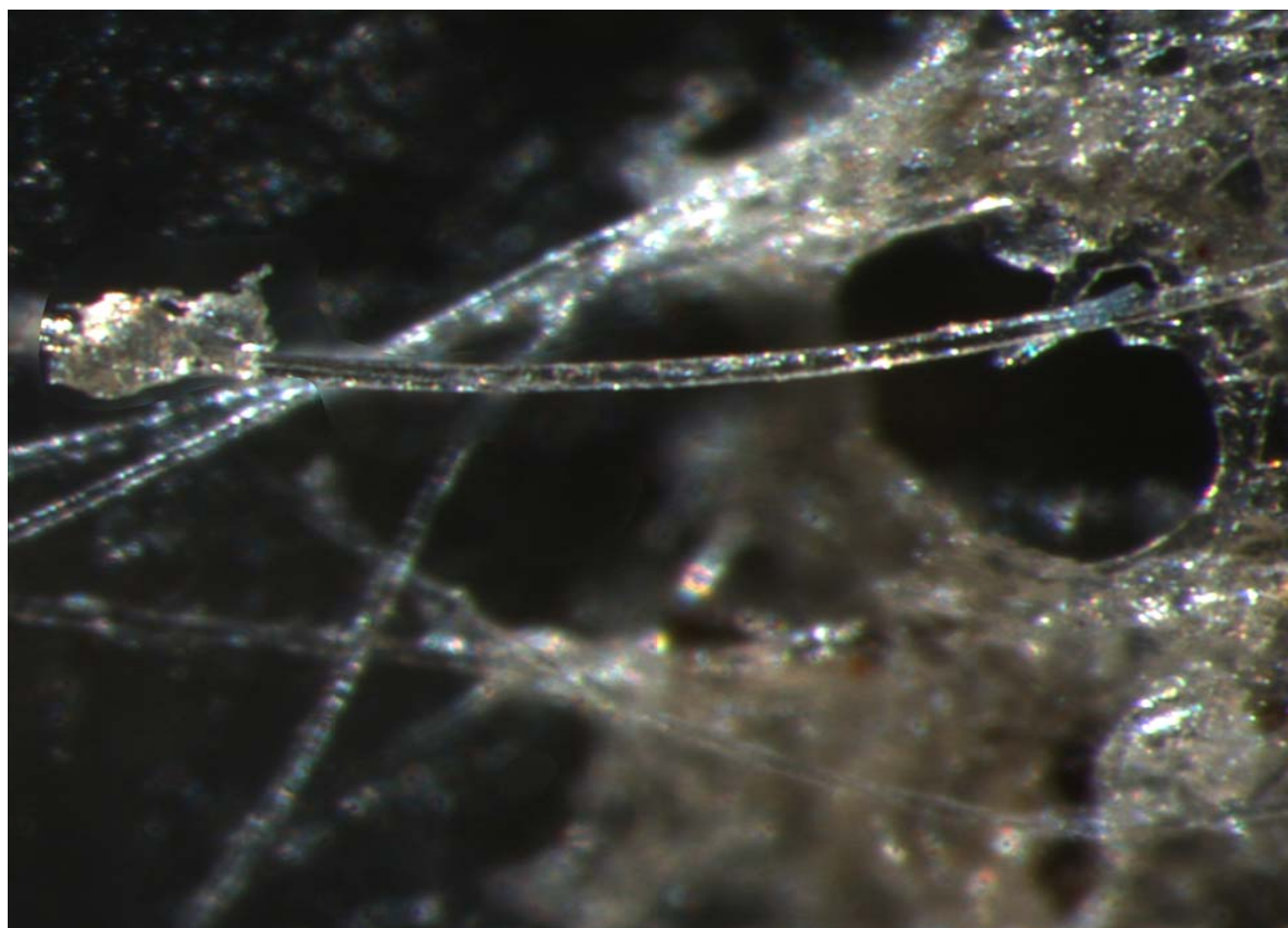
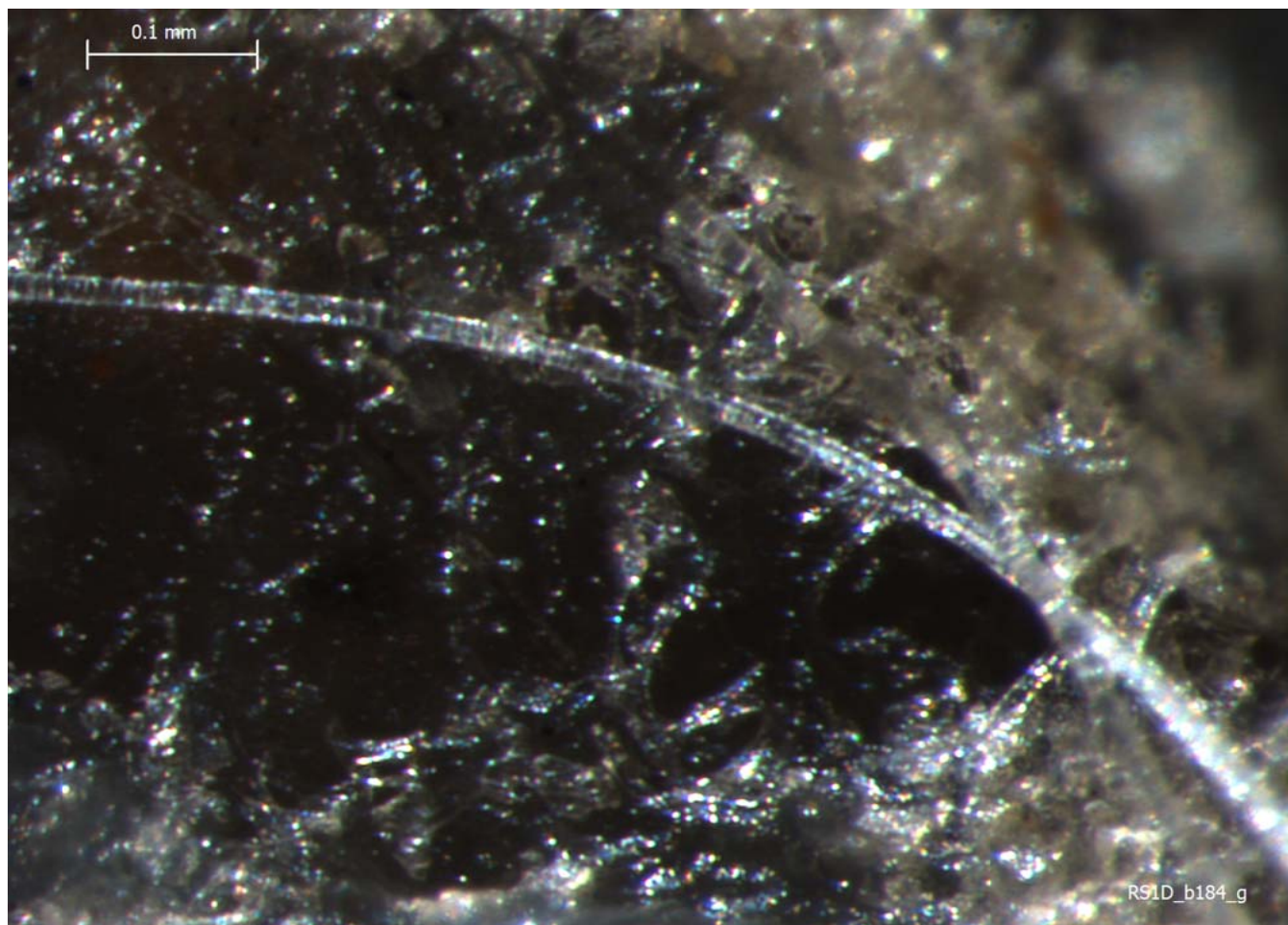


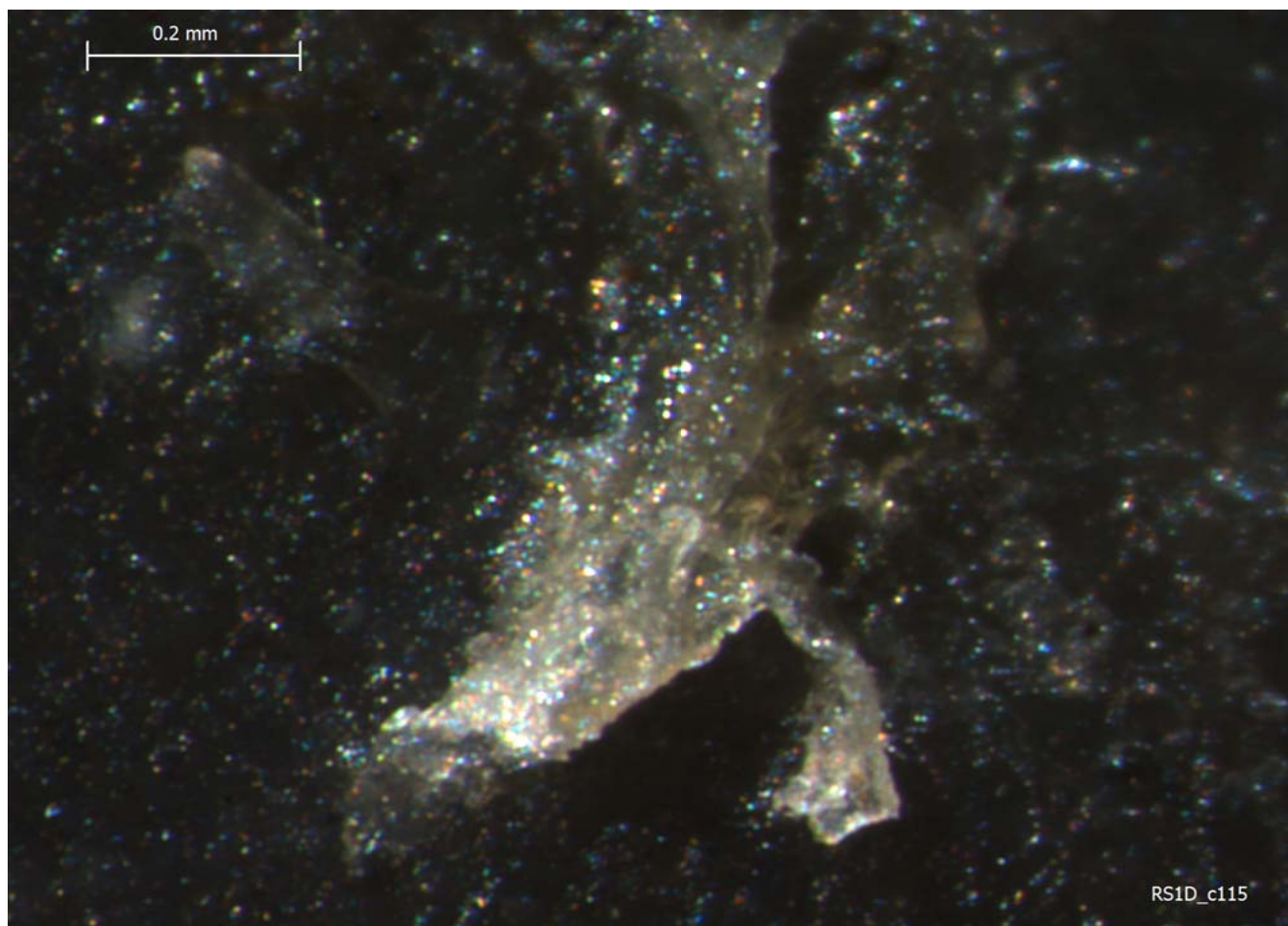
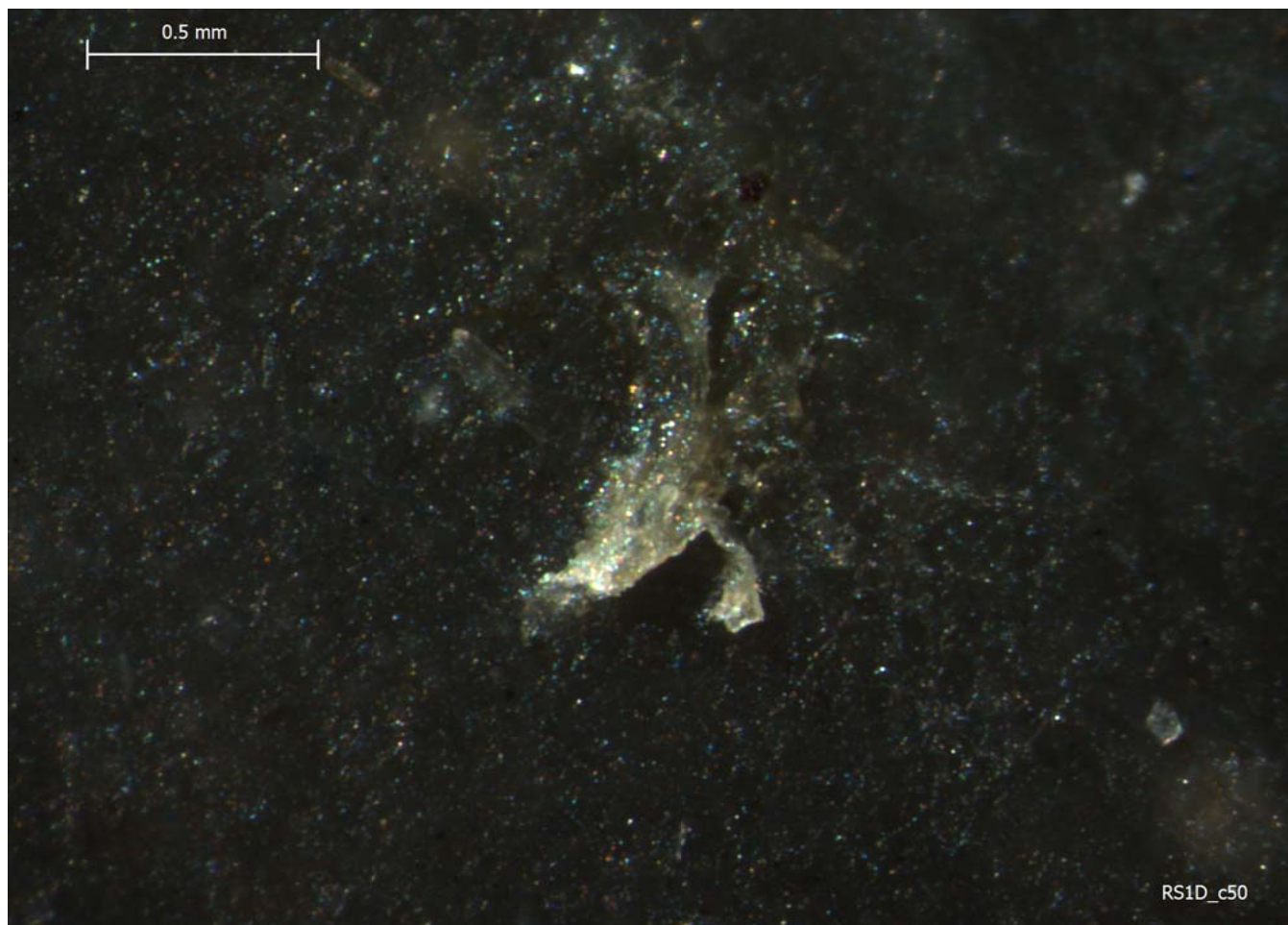


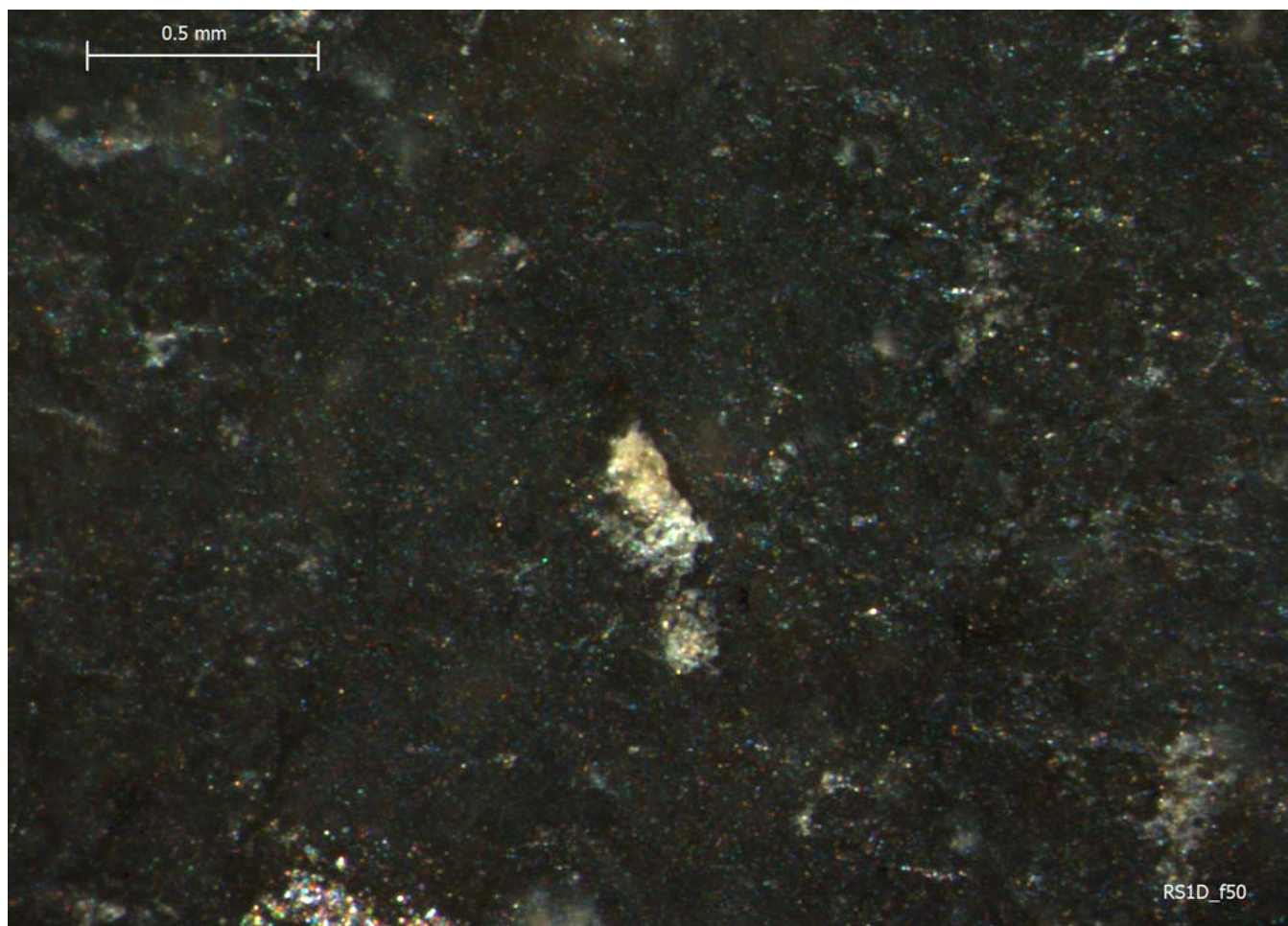
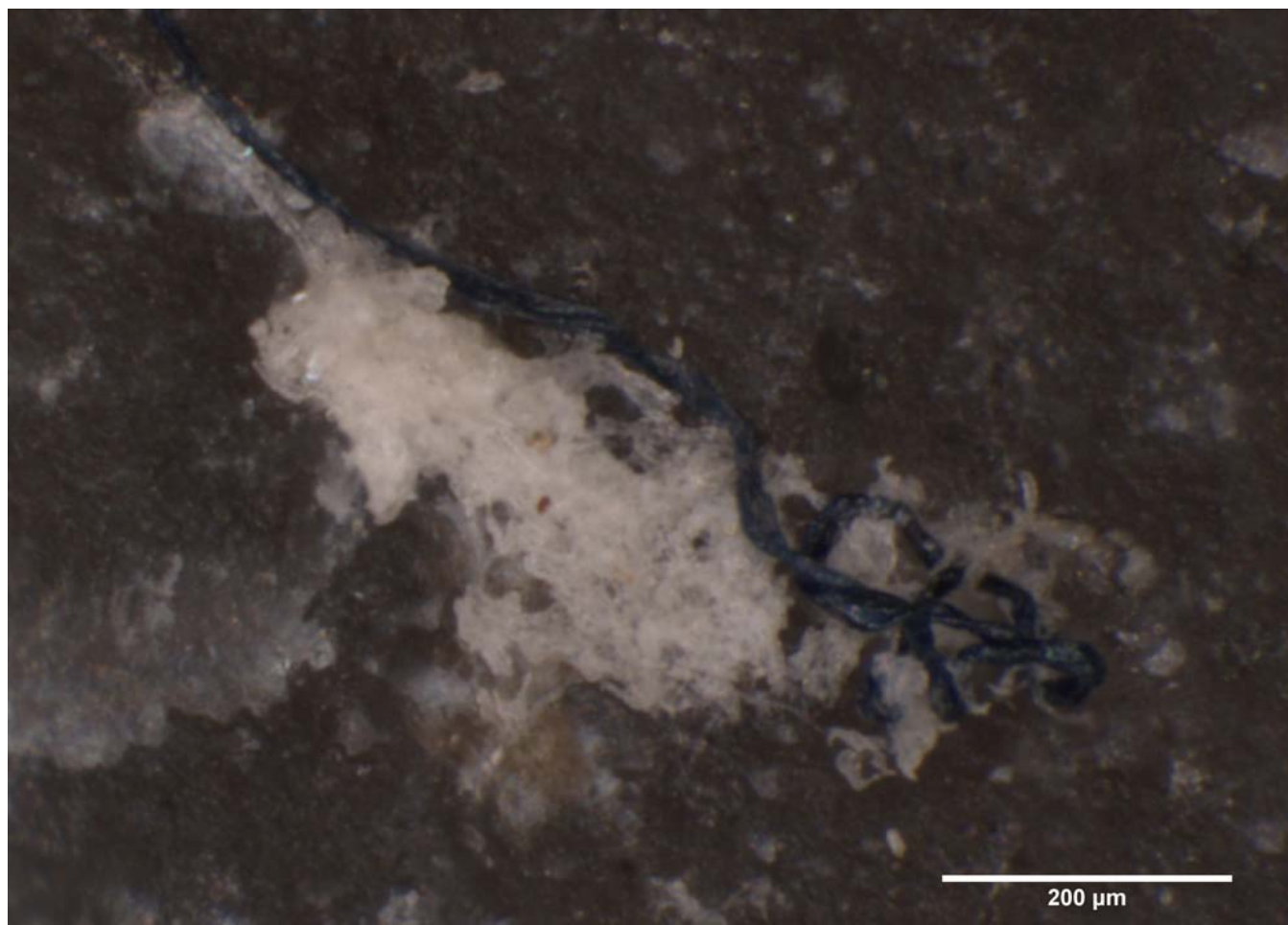


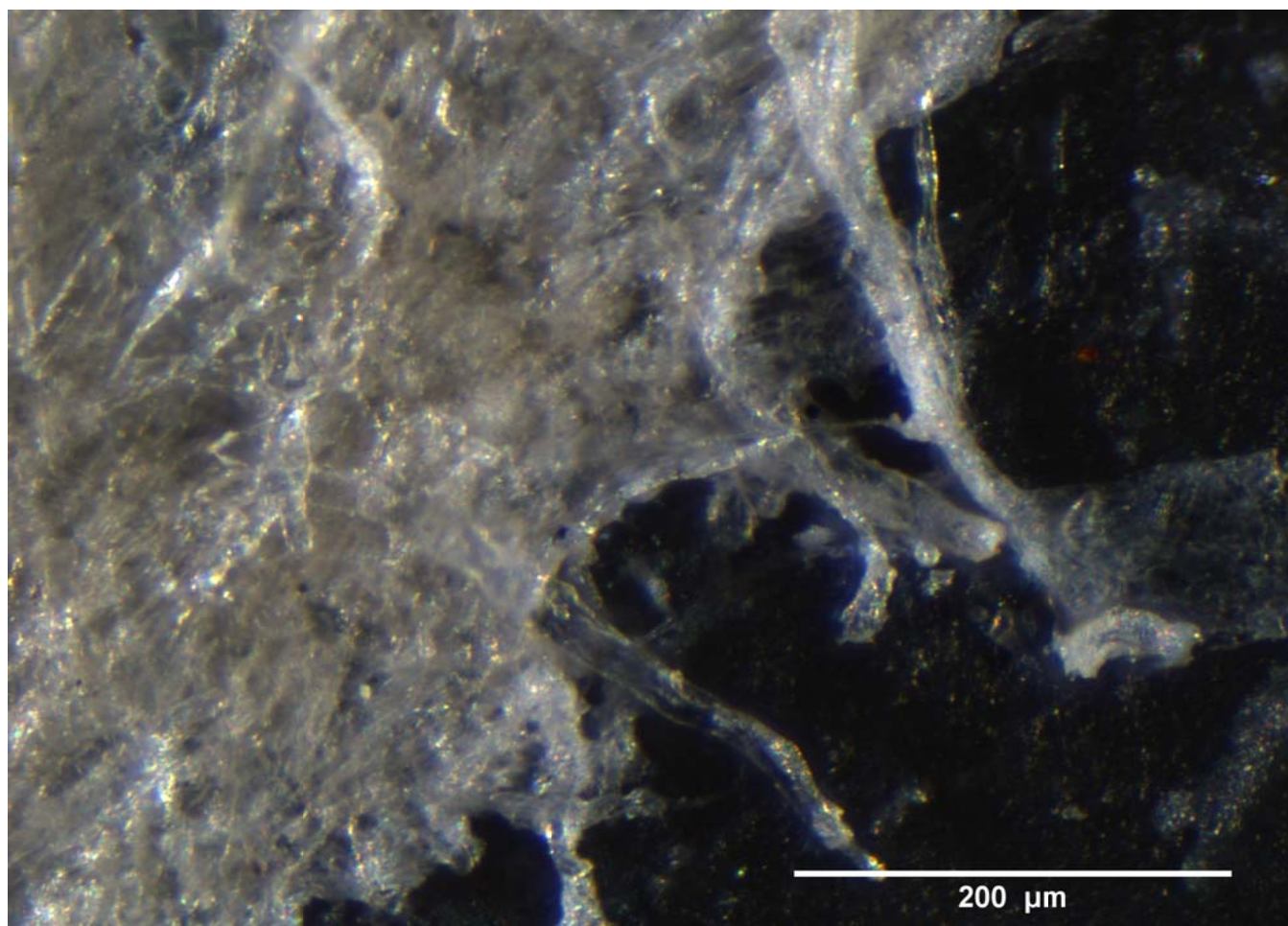
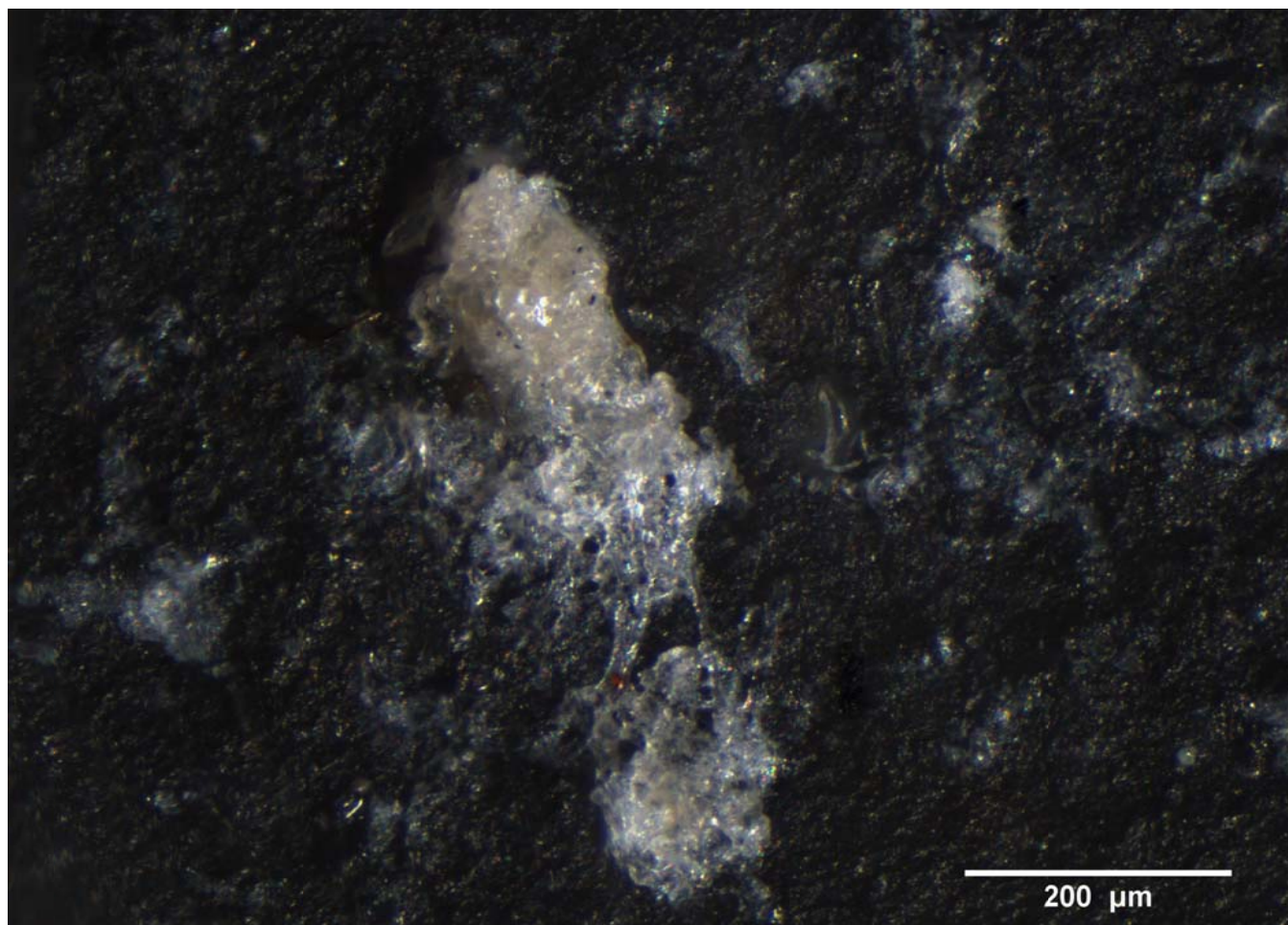


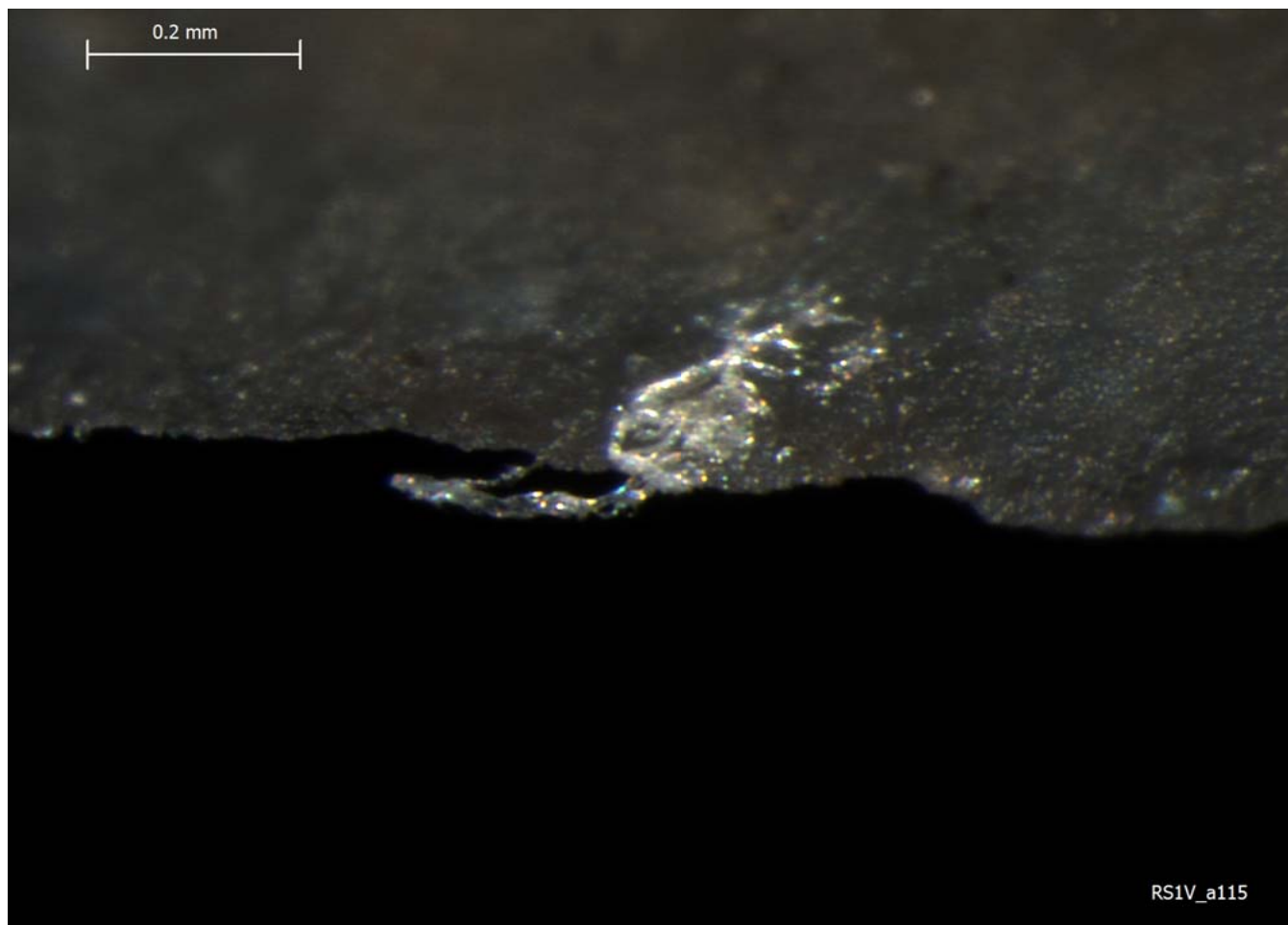


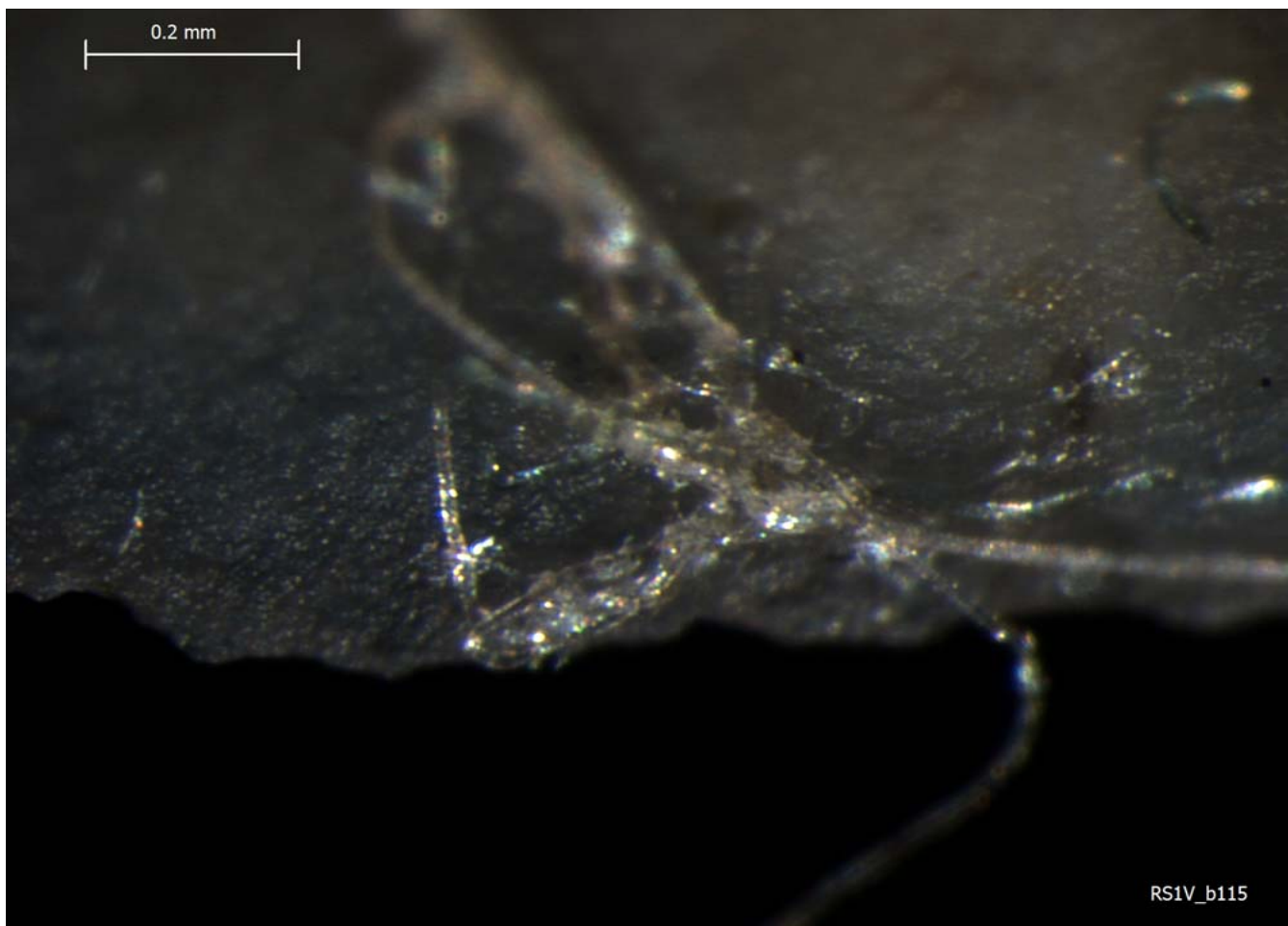


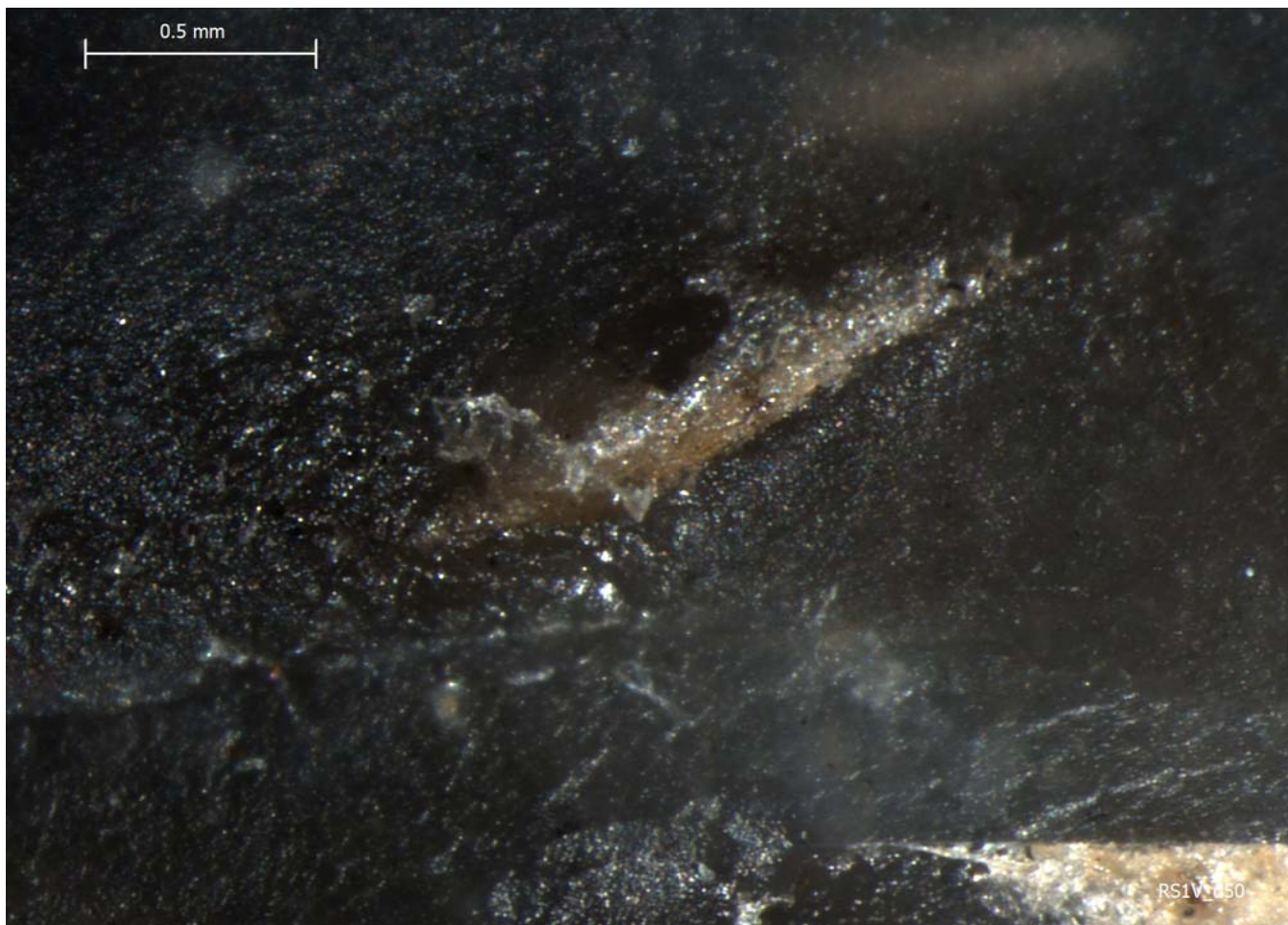


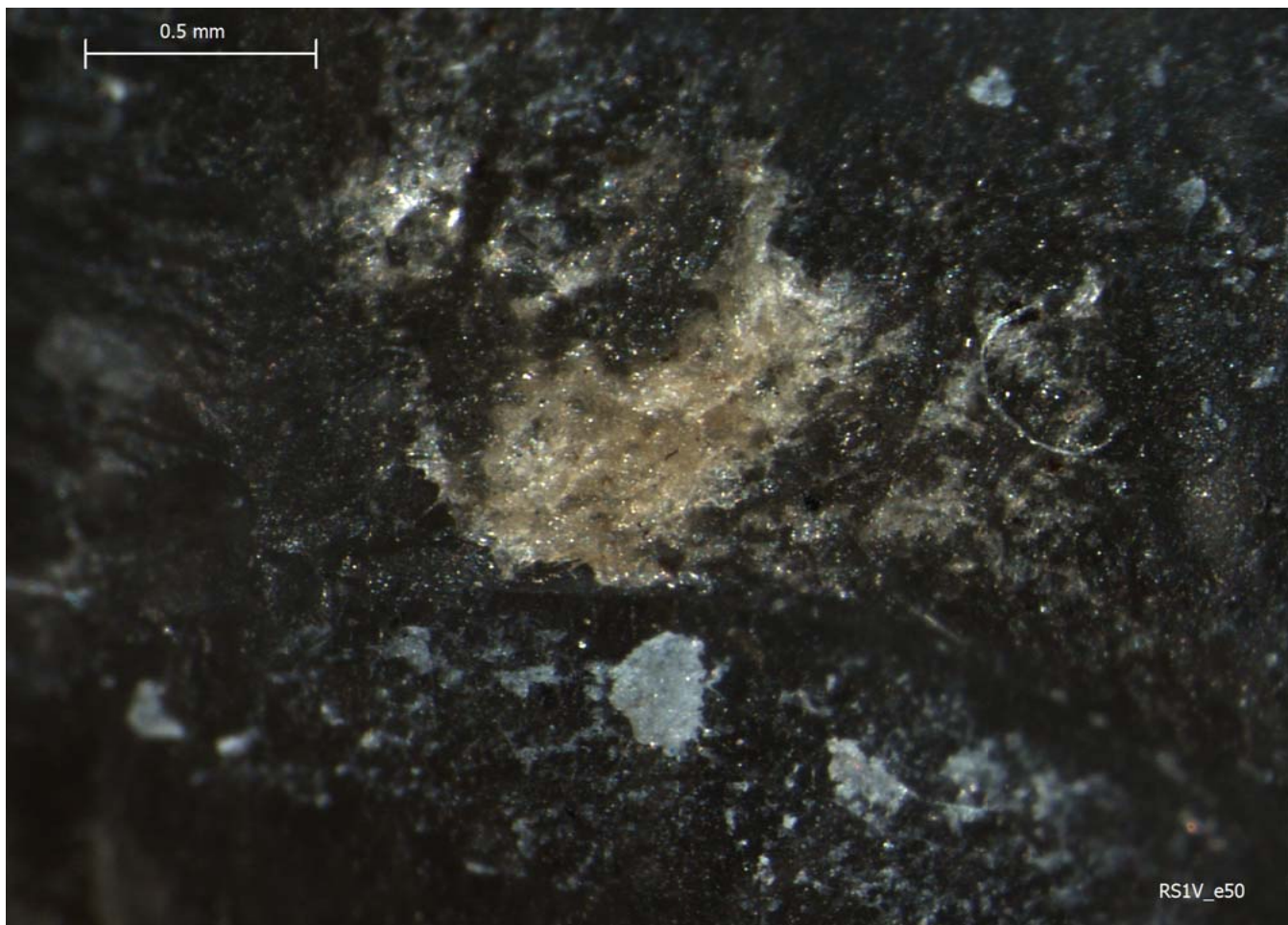
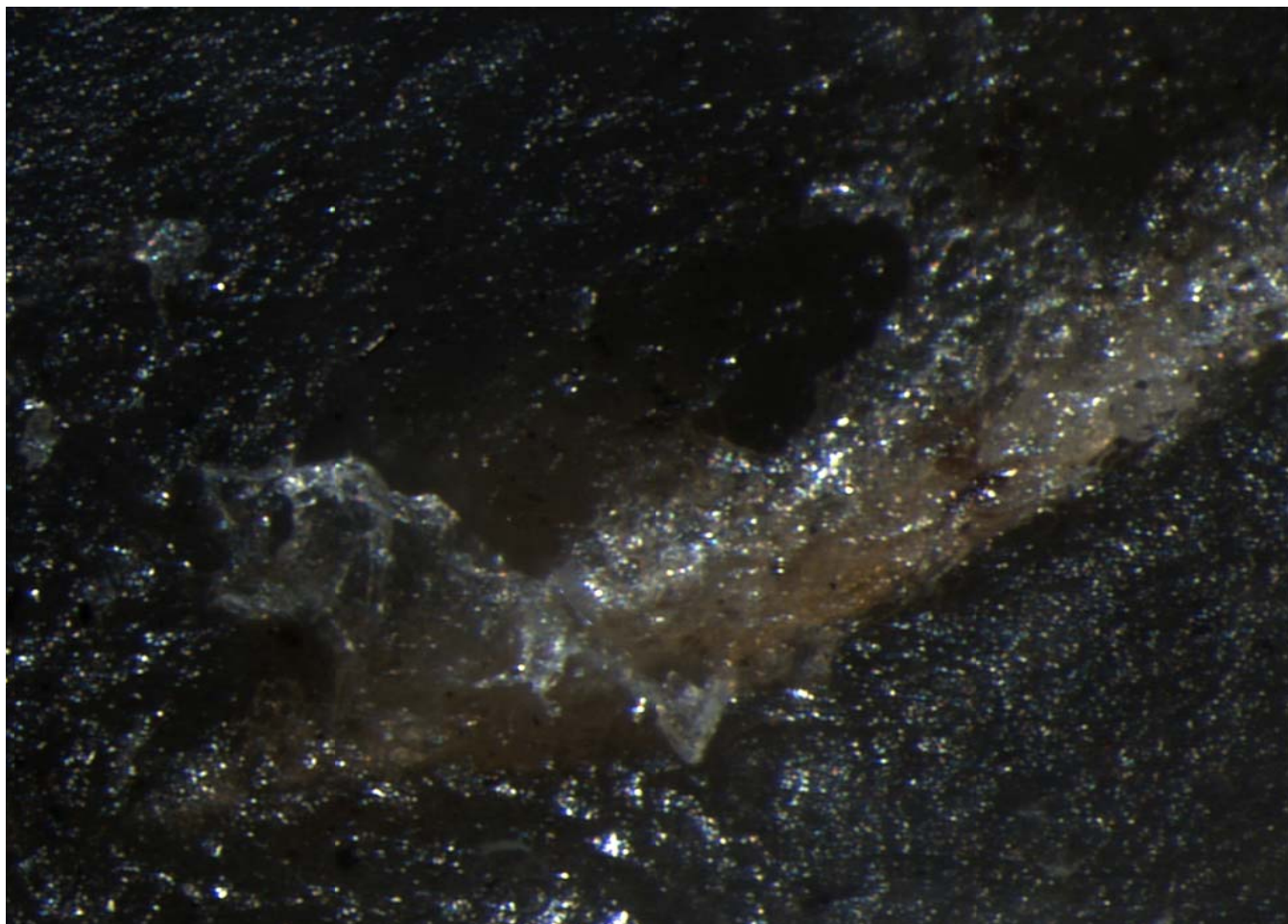


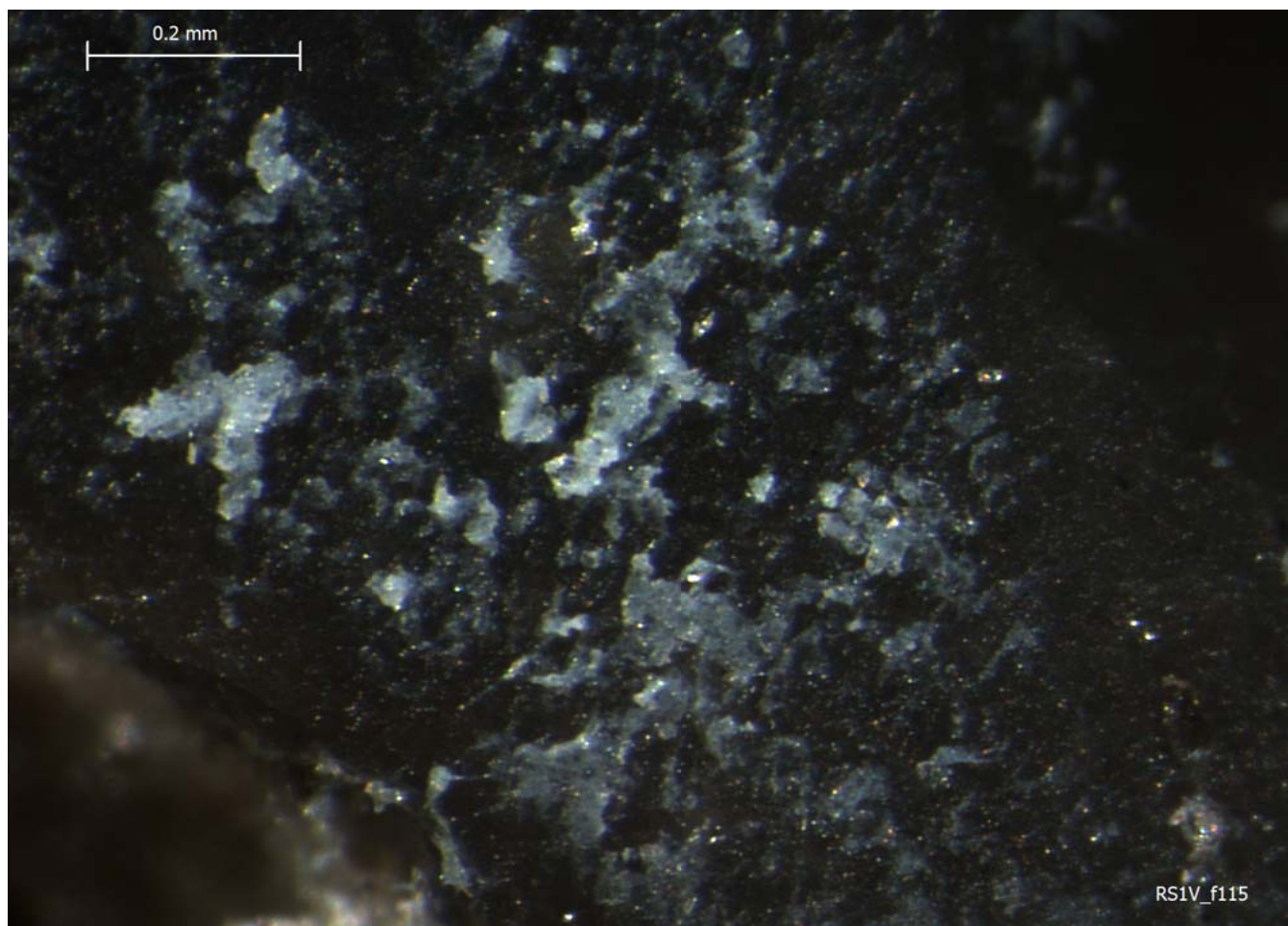
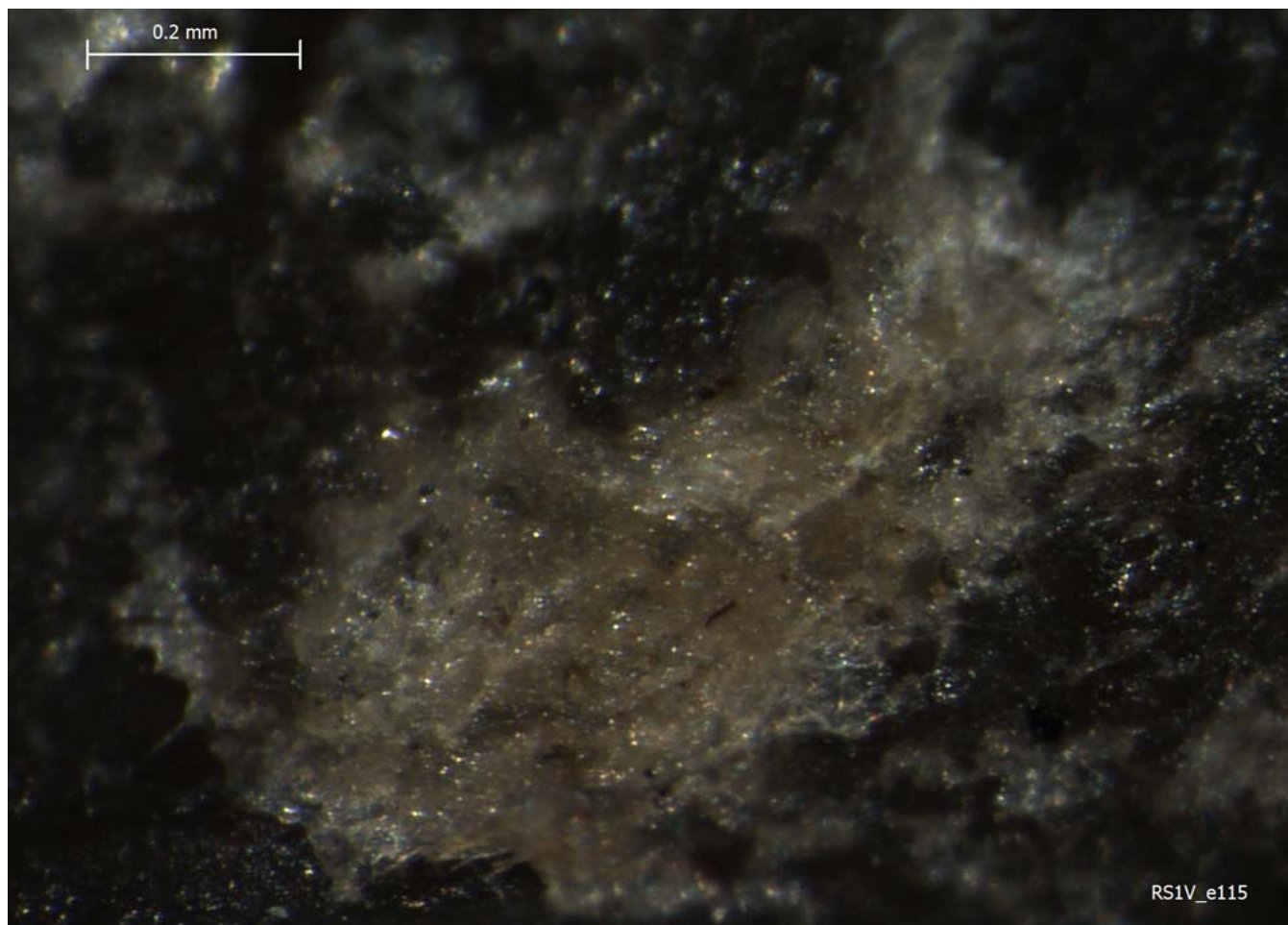


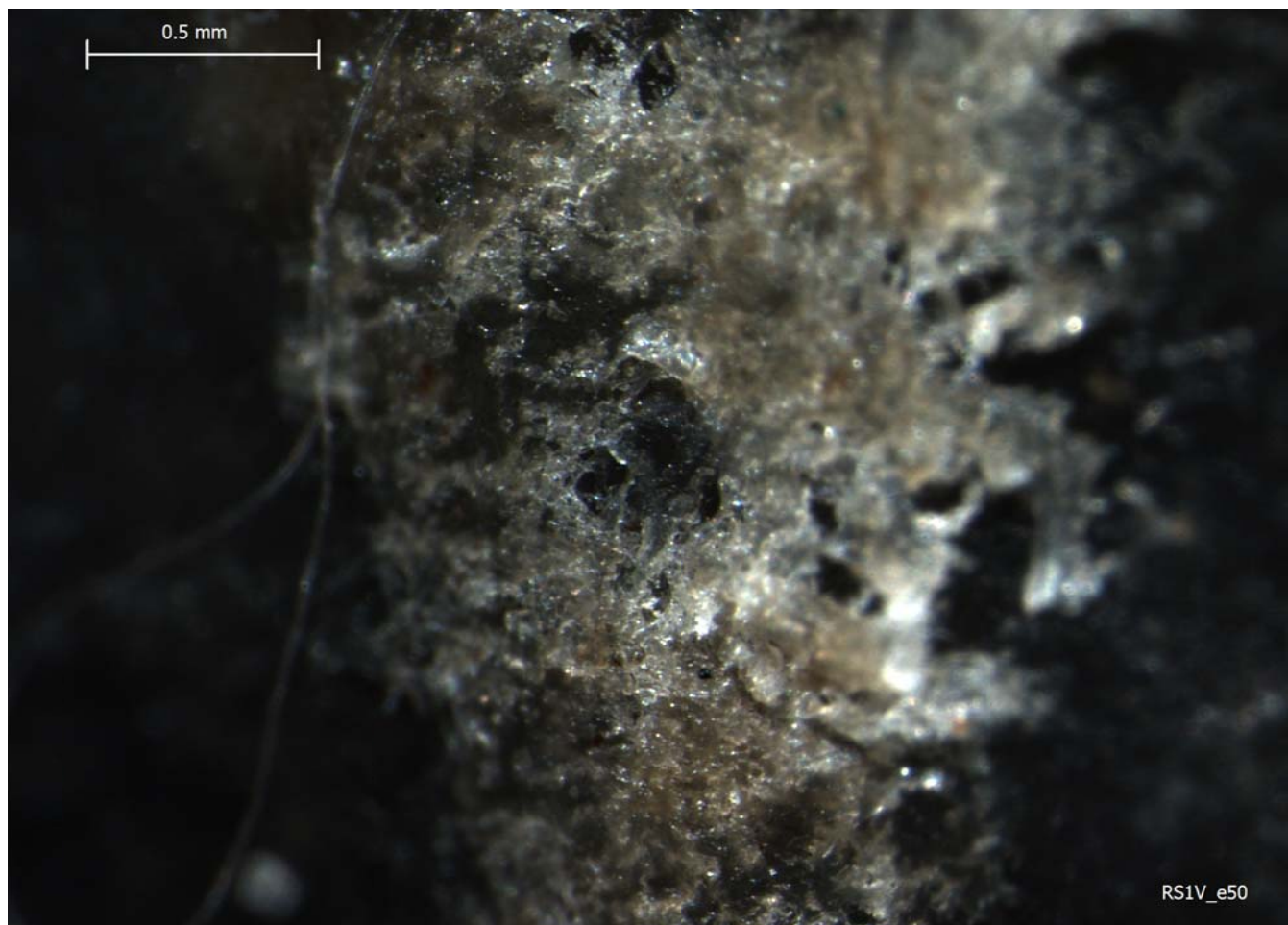


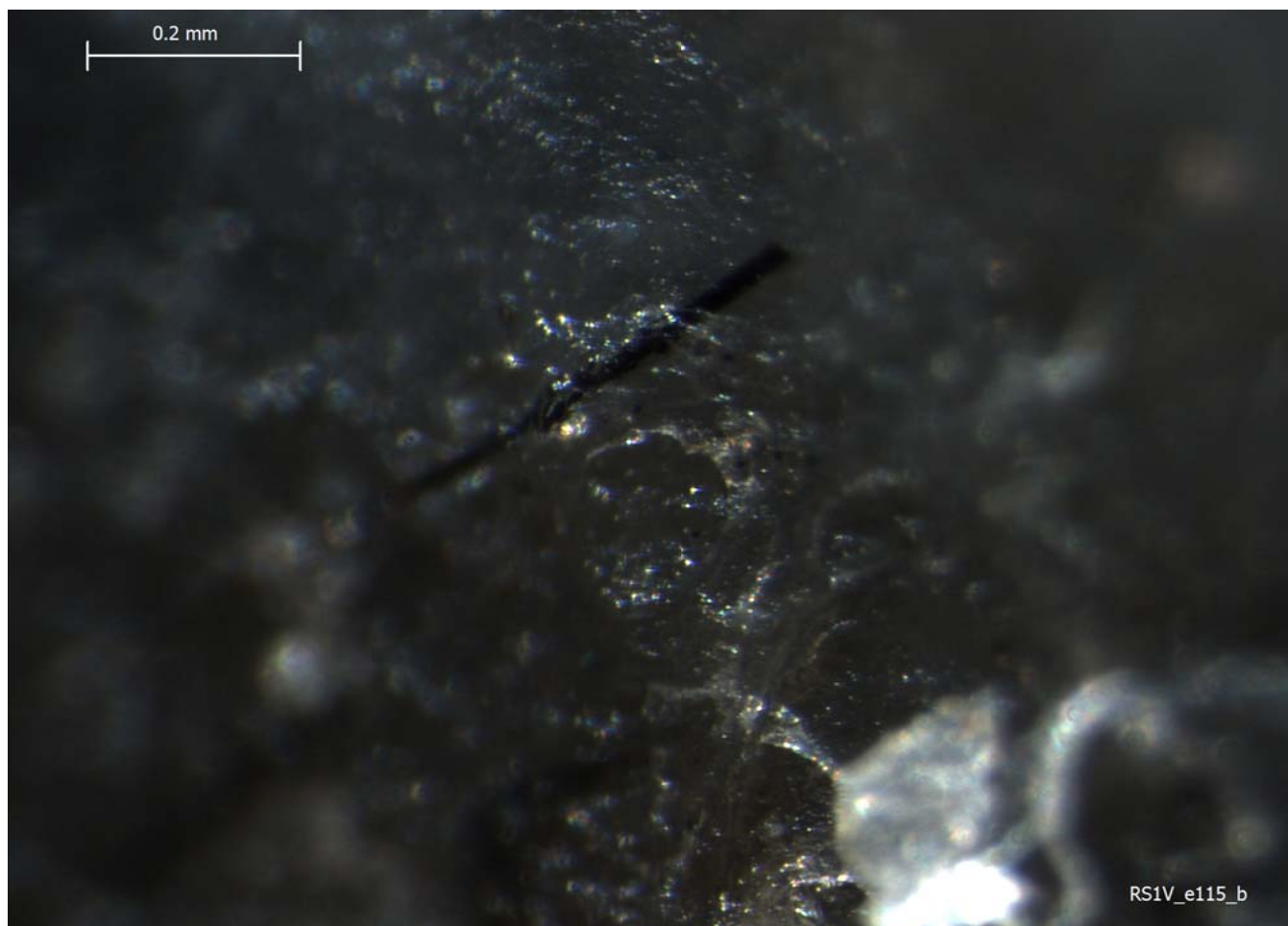
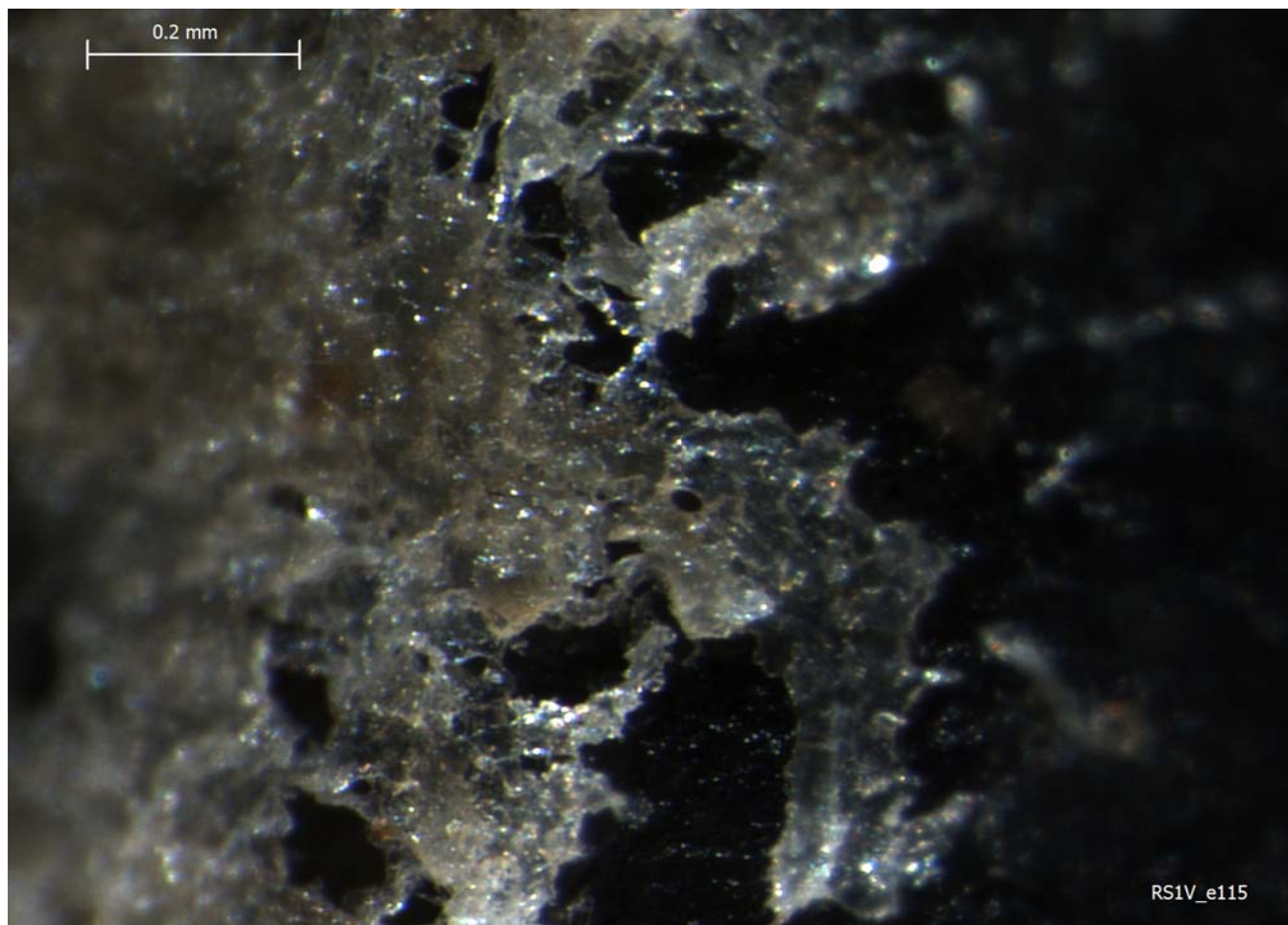


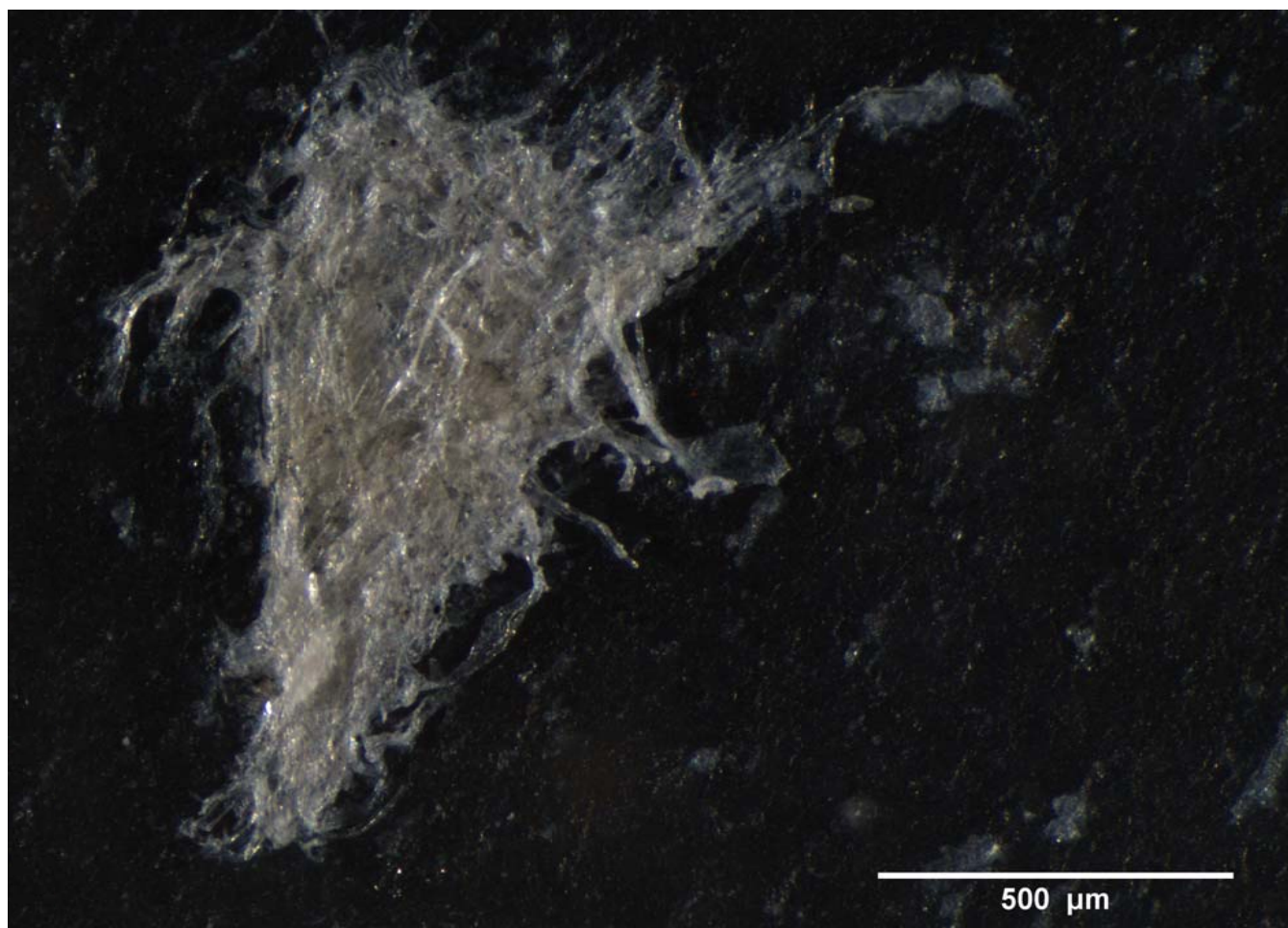
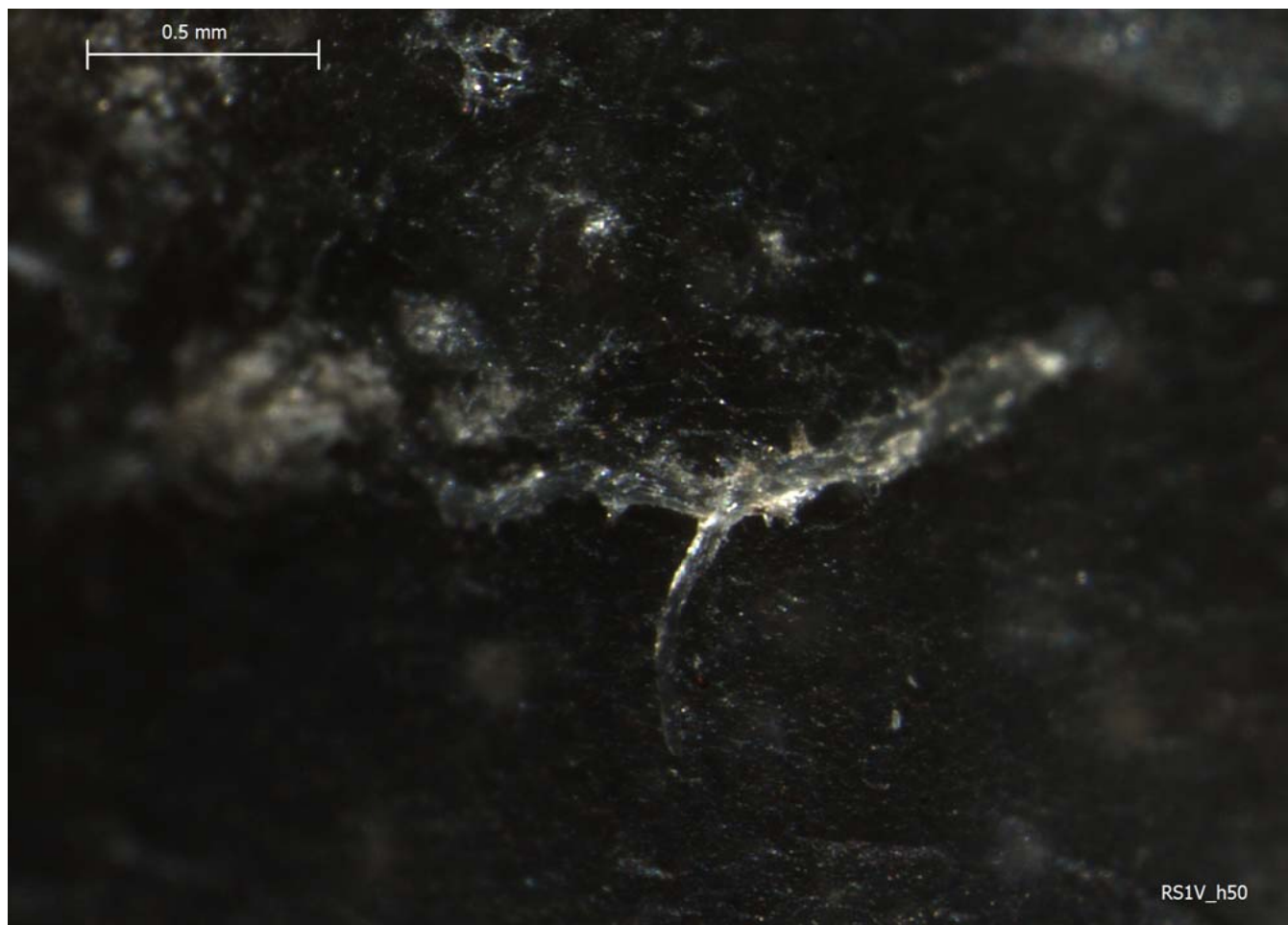


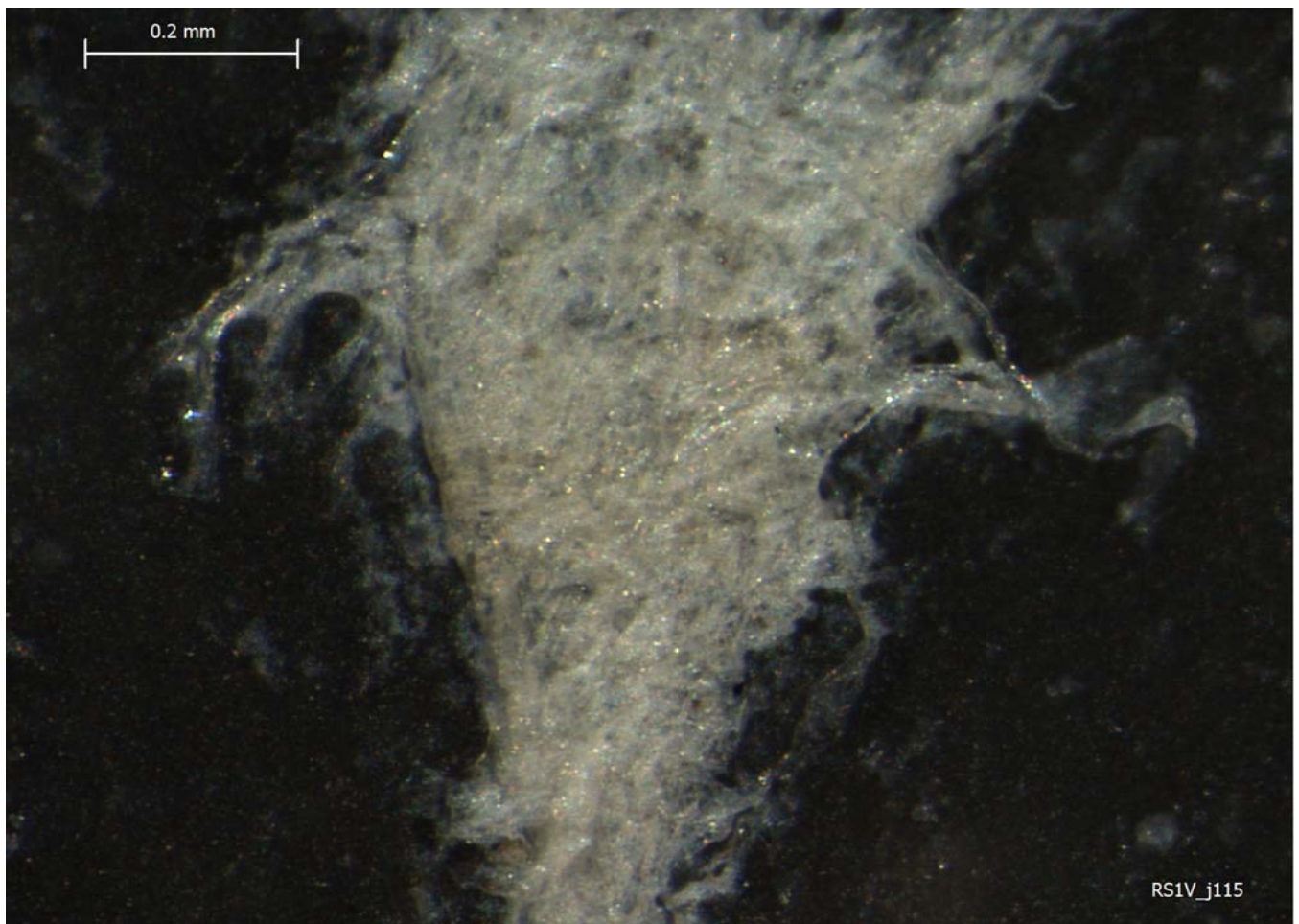


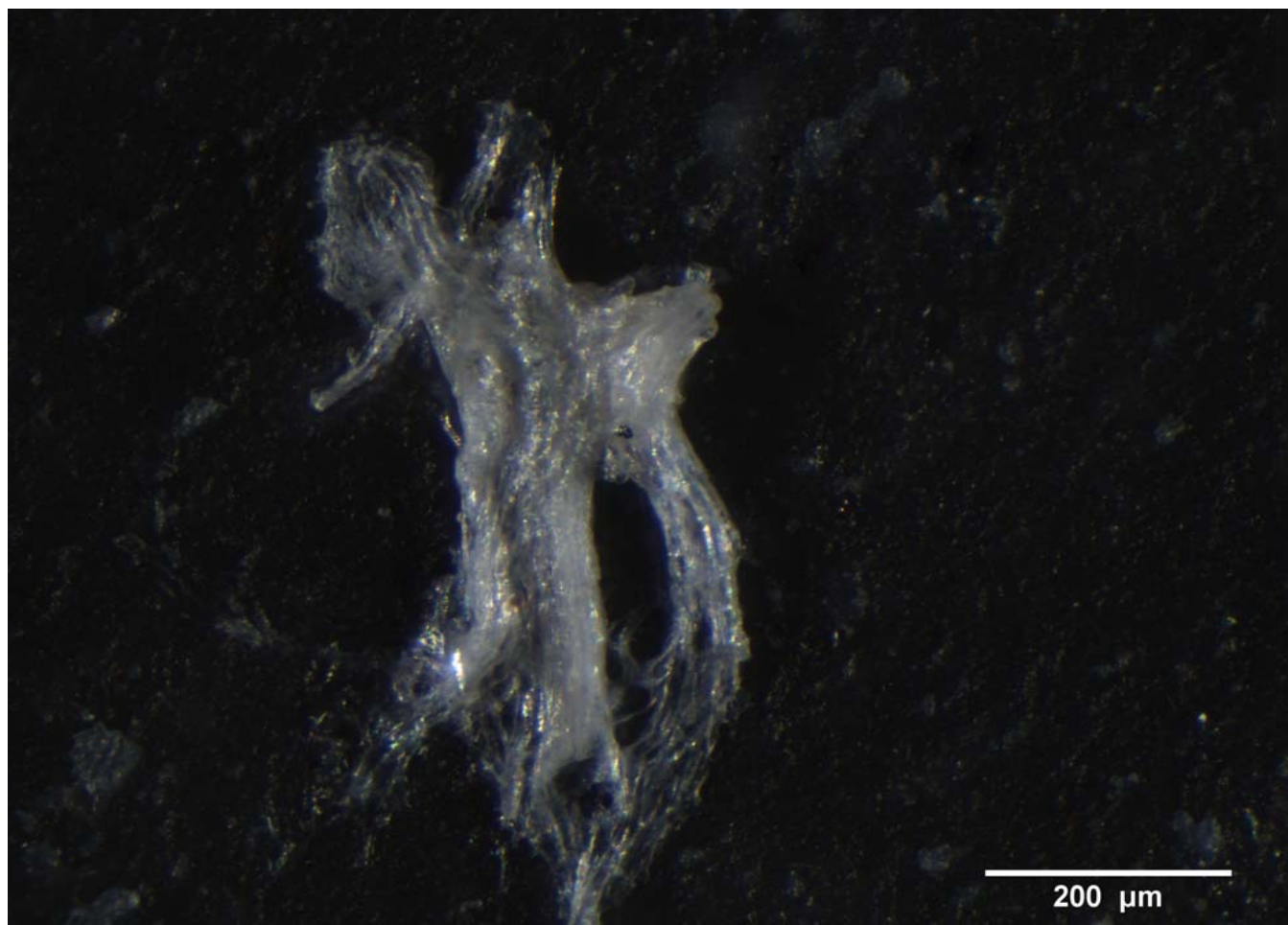












0.2 mm

RS1V_k115